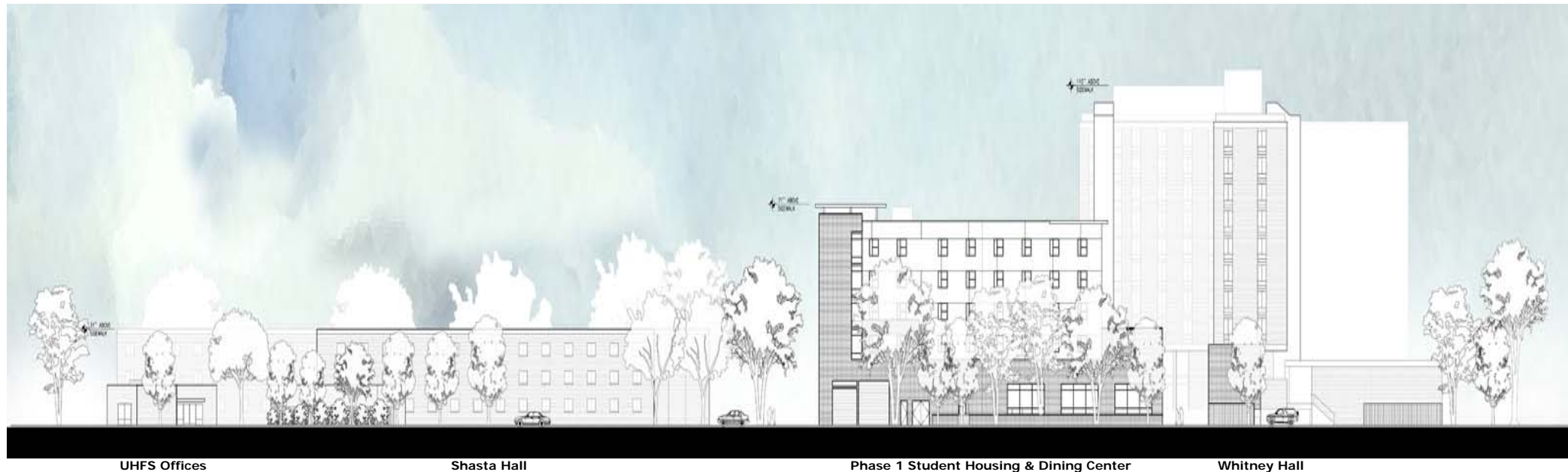


PHASE 1

STUDENT HOUSING + RESIDENTIAL DINING CENTER

California State University, Chico



PHASE 1 BUILDING PROGRAM PROFILE

- 220 residence hall beds
- Residential dining center
- Program building to replace UHFS activity center (REC)
- Total build-out will provide approximately 112,000 gross square feet
- Project budget: estimated at \$52 million
- Funding source: State revenue bond sale
- Bond debt obligation: University Housing room rent revenues

Our Shared Future – Beyond Phase 1 - Student Housing Expansion

Phase 2A – College Park real property acquisition

Phase 2B - College Park initial build-out } 250-400 beds

Phase 2C – College Park secondary build-out } 250-400 beds

Phase 3 - Whitney Hall } renovate or replace – 400 bed yield

Long-term UHFS program service goal – 3,000 residence hall beds

ANTICIPATED CONSTRUCTION SCHEDULE

- > Establish preliminary construction site perimeter (January 2008)
- > Demolition of UHFS activity center (January 2008)
- > Driven “test” piles (mid-January 2008)
- > Site excavation to begin (January/February 2008)
- > Establish secondary construction site perimeter (February 2008)
- > Site utility installation (February 2008)
- > Board of Trustees “GMAX” approval (March 2008)
- > New construction activity begins (April 2008)
- > Driven pile/foundation installation begins (June 2008)

UHFS Program Scope & Structure

A comprehensive student housing program which includes:

- > residential life programming
- > student leadership development
- > residential dining food service administration
- > business operations/administration
- > information technology
- > summer conferences, food service & off-campus housing
- > facility operations (maintenance, custodial & grounds)
- > capital planning and coordination
- > student conduct administration

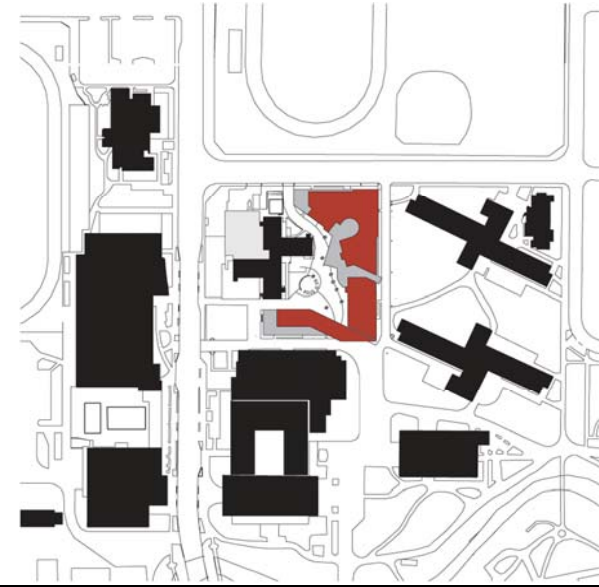
East Elevation



North Elevation



Courtyard View



Project Site Aerial View

