

**DEPARTMENT OF GEOGRAPHY and PLANNING**

CALIFORNIA STATE UNIVERSITY, CHICO

**GEOGRAPHY 428  
SITE PLANNING  
COURSE SYLLABUS**

Spring, 2012

---

<b>Instructor:</b>	<b>Pam Figge</b>	<b>Class Time:</b> M/W 4:00 - 5:15 pm
<b>Office:</b>	<b>Butte 508</b>	<b>Room:</b> Butte 503
<b>Hours:</b>	<b>M/W 3:00 pm – 3:50 pm or by appt.</b>	<b>Phone:</b> (home) 809-1122
<b>E-mail:</b>	<a href="mailto:pfigge@csuchico.edu">pfigge@csuchico.edu</a>	

---

*"We shape our buildings; thereafter, our buildings shape us."*

**Winston Churchill**

*"These old buildings do not belong to us only, they belong to our forefathers and they will belong to our descendants unless we play them false.*

*They are not in any sense our own property to do with as we like with them.*

*We are only trustees for those that come after us."*

**William Morris**

*"It's not good because it's old, it's old because it's good."*

**Anonymous**

**COURSE DESCRIPTION:**

This course explores the relationship of physical, biotic, cultural, and aesthetic factors to land use planning. Techniques for sustainable site development and/or conservation/preservation including, but not limited to: analysis and layout, topography, grading, slope stability, infrastructure, hydrology, vegetation/landscape, and functional design will be explored. A specific site planning project is undertaken by the class each semester; therefore, class content may change. Lectures will highlight site planning with supplement information regarding historic preservation - this semester's focus.

The class involves the practical application of basic land use planning concepts and knowledge. A lecture format will be conducted during the early weeks of the class. Students will be divided into working groups to perform specific planning tasks related to our class project. Field surveys will be conducted on various days, including some weekends (dates are on the syllabus); therefore, the class may not meet on a particular class date or it will meet for only a portion of the scheduled time. Additionally, students will meet with their assigned group outside the regular class time to draft project work.

**This class demands that each student work to the best of her/his ability in a group situation. Your grade depends on your involvement and commitment to your fellow students and our "plan."**

**REQUIRED READING:** On the class Vista page and pertinent websites prior to discussion/lecture on a specific topic.

**COURSE REQUIREMENTS:**

	Possible Points	Grading Scale
Mid-Term Examination	100	A = 270-300
Exercise	50	B = 269-240
Class Project/Participation	<u>150</u>	C = 239-210
		D = 209-180
		F = below 180
<b>Total</b>	<b>300</b>	

The mid-term examination will be objective (true/false, multiple choice) and short answer/essay based on readings and class lectures/presentations. Lectures will address subject matter which is not covered in the reading; therefore, class attendance is important. The Instructor will provide a list of topics and essay questions for study prior to the exams. Students will be allowed to bring in notes (one page) to use during the exam. No copies of the instructor's Power Point presentations or photocopies of required readings will be allowed.

Class Exercise: A self-guided field trip around Chico which will introduce you to various types of neighborhoods and adjacent infrastructure is required. You will tour the specified areas and answer questions pertaining to your impressions. The information sheet for the exercise is on our Vista page.

Scheduled assignments not turned in on the due date, will lose 5 points per day.

**Graduate students** enrolled in this course are expected to assume a leadership role in the class. Tasks include specific "hard copy" work for the final document plan, and a major role in the final plan presentation.

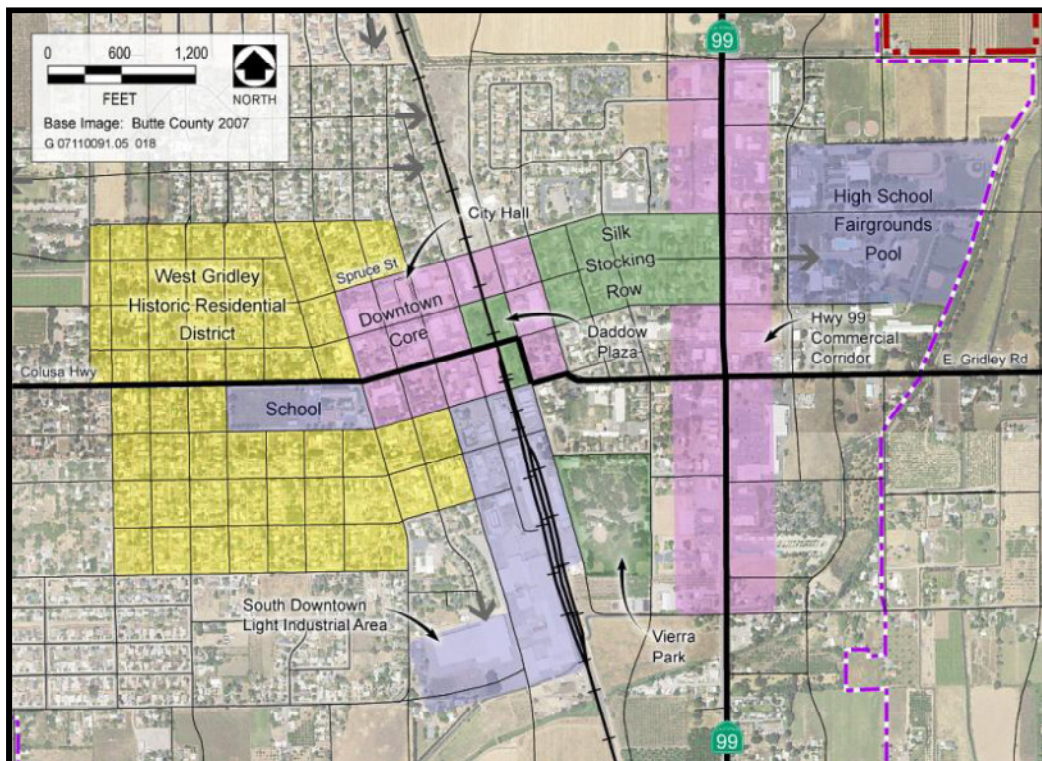
Class Project

**HISTORIC DOWNTOWN GRIDLEY SURVEY AND PRESERVATION PLANNING**



This class proposes "real life" projects in which students and the resources of the University can help communities with land use planning projects. Working in a community with local citizens is a valuable experience found outside the classroom.

Our "client" is Andrea Redamonti, City of Gridley Community Development Director. We will be working with Ms. Redamonti within a defined area (Downtown Mixed Use General Plan Designation). We will conduct research to determine which structures are contributing and non-contributing within the Downtown Core (Historic District) as a preliminary step in preparing a Local Historic List, a Preservation Ordinance and Zoning Map Overlay District. Additionally, there are "Opportunity Sites" to consider for development and re-use that **may** be included within our study.



Project work will include: formation of research/data collection and plan/recommendation teams; review of existing documents (including the City's General Plan and Zoning regulations), maps, photographs, etc. related to our project area; an analysis of existing conditions through field reconnaissance. Based on our data collection, we will draft the Historic Contextual Setting, provide recommendations for a local historic inventory list and prepare a plan of action which may include draft preservation ordinances (text and zoning amendments).

Work products: hard copy study document and a Power Point presentation to the Gridley City Council and/or Planning Commission.




There will be guest speakers related to our study during the beginning of the semester. Not all speakers have been confirmed. Required reading will be on our Vista page, specified Web Pages and hand-outs.

**Recommended Books  
and Planning Advisory  
Service Reports (PAS)**

**The Death and Life of Great American Cities - Jane Jacobs**  
**Innovative Tools for Historic Preservation - Marya Morris**  
**Preparing a Historic Preservation Plan - Bradford White & Richard Roddewig**

**Preliminary Class Calendar - Field Trips to Gridley  
to be decided throughout the semester**

<b>Date</b>	<b>Topic</b>	<b>Assignment</b> VISTA (V) or listed websites; Work Product
<b>1/23 &amp; 25</b>	Welcome - Getting to Know You; What is Site Planning? The User	Site Planning and Design: <a href="http://ri.wvu.edu/WebBook/McBride/section3.html">ri.wvu.edu/WebBook/McBride/section3.html</a> ; Jacobs: Chp 1(V)
<b>1/30 &amp; 2/1</b>	Topography, Natural Elements, Infrastructure/Open Space and Design  <b>Form Research Groups</b>	Gridley General Plan Community Design Element <a href="http://www.gridley.ca.us/city-departments/planning-department">http://www.gridley.ca.us/city-departments/planning-department</a> Morris: Chp 4 Preservation and the Comprehensive Plan (V); "Sacramento-area housing shift seen as suburban spread lose appeal" (Sac Bee) (V)
<b>2/6 &amp; 8</b>	What's So Special About Downtown and Old Buildings? Reconnaissance Survey <b>2/8 Andrea Redamonti, Gridley Community Development Director</b>	Jacobs- Chps: 8 & 10 (V) Planning for Downtown Housing(V); <a href="http://ohp.parks.ca.gov/?page_id=1066">http://ohp.parks.ca.gov/?page_id=1066</a> <b>Objectives for Data Collection</b> <a href="http://www.sandiego.gov/planning/programs/historical/faq/surveys.shtml">http://www.sandiego.gov/planning/programs/historical/faq/surveys.shtml</a>
<b>SATURDAY - FEBRUARY 11 - FIELD TRIP TO GRIDLEY 10-1:00</b>		

Date	Topic	Assignment
2/13 & 15	Historical Resources and Preservation; Historic Context; Guidelines for Local Surveys 2/15 Amy Huberland, NEIC	<a href="http://ohp.parks.ca.gov/pages/1072/files/writing%20historic%20contexts.pdf">http://ohp.parks.ca.gov/pages/1072/files/writing%20historic%20contexts.pdf</a> <a href="http://ohp.parks.ca.gov/pages/1072/files/format%20for%20historic%20context%20statements.pdf">http://ohp.parks.ca.gov/pages/1072/files/format%20for%20historic%20context%20statements.pdf</a> <a href="http://www.nps.gov/history/nr/publications/bulletins/nrb24/">http://www.nps.gov/history/nr/publications/bulletins/nrb24/</a>
2/20 & 22	Certified Local Government 2/22 Bob Summerville, City of Chico Where do we find it ? Primary and Secondary Information; Local Ordinances for Historic Preservation	Data Collection for Existing Conditions; <a href="http://www.chico.ca.us/document_library/municodetitle19.pdf">http://www.chico.ca.us/document_library/municodetitle19.pdf</a> - Chapter 19.37 Historical Preservation
<b>SATURDAY - FEBRUARY 25 - FIELD TRIP TO GRIDLEY 10-1:00</b>		
2/27 & 2/29	Existing Conditions Work	<b>Contextual Setting Drafted; Format adopted</b>
3/5 & 7	▶ CLASS EXERCISE DUE 3/5	
3/12 & 14	▶ MID-TERM EXAMINATION 3/12	
3/19 & 21		SPRING BREAK
3/26 & 28	Group Work	<b>Contextual Setting Final</b>
4/2 & 4	Group Work	<b>Preliminary Block Data</b>
4/9 & 11	Group Work	<b>Data Analysis &amp; Discussion</b>
4/16 & 18	<b>Plan Preparation; Chapter Outline, Power Point Presentations</b>	
4/23 & 25	<b>ALL HARD-COPY WORK SUBMITTED 4/27</b> <b>Final Editing of Hard-Copy Document – Powerpoint Presentation Work</b>	
4/30 & 5/1	<b>POWER POINT COMPLETED</b> <b>GROUP PRESENTATION PRACTICES</b>	
5/7 & 5/9	<b>PRESENTATION WEEK -- May 7 Gridley City Hall</b>	
5/14 & 12	▶ FINALS WEEKS	

**ENJOY YOUR SUMMER !**