



# Simulation Specialty Course Menu

Choose What You Need From Our Simulation Menu

July 2 -2 , 201

9am to 4pm

Four Courses on the Menu! Attend Only One or All Four!

*This course is designed for educators who want to add meat to their simulation courses! Plan to “Order Up” for Simulation Success!*



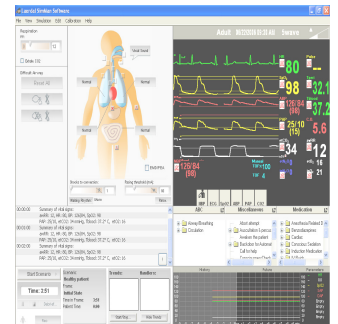
**Debriefing**



**Scenario Design**



**Moulage & More**



**Technology Tips and Programming Pearls**

## Rural Northern California Clinical Simulation Center

“Increasing Patient Safety Through Improved Clinical Proficiency and Teamwork”

We are proud to announce The Rural SimCenter has been accredited by the Society for Simulation in Healthcare in the area of education and teaching!

Provider approved by the California Board of Registered Nursing Provider #15338. Each course is approved for 6 Contact hours.

It is possible to receive 24 contact hours by attending all 4 courses.





---

**Goals:** This smorgasbord of courses will allow the simulation educator to fine tune special areas of simulation design. Each course stands alone so the participant can attend only those courses where they would like additional instruction. All four courses complement but don't repeat information in the two simulation educator courses offered at the Rural SimCenter.

**July 2 Debrief Course Participants will:**

1. Discover ways to use debriefing to link simulation events with real world experiences.
2. Review the use of debriefing tools such as checklists and competency scales.
3. Understand the benefits of debriefing with video.
4. Practice debriefing using tools and techniques discussed.
5. Understand and practice techniques for success with the "difficult debrief".

**July 2 Scenario Design Course Participants will:**

1. View a demonstration of scenario design tools and techniques.
2. Discusses the design process in the creation of scenarios.
3. Evaluate the impact of scenario design on satisfaction and mastery of course objectives.
4. Work in small groups to create scenarios using tools provided.
5. Use scenario validation tools and understand the rationale for scenario validation.

**July 2 Moulage and More\* Course Participants will:**

1. Discuss the value of using realistic moulage in scenario design
2. Practice creating moulage using recipes and methods provided.
3. Discuss the importance of moulage in enhancing the role-play experience.
4. Review tips for using moulage with human patient simulators: protect and defend.
5. Recognize new moulage materials and possibilities to simulate medical conditions.

**July 2 Technology Tips and Programming Pearls\*\* Participants will:**

1. Identify mannequin Graphic User Interface system components common with all manufacturers' mannequins.
2. Demonstrate steps to assure success with simulation technology.
3. Understand how to utilize instructor workstations, mannequin software and remote control and wireless features of the mannequins.
4. Identify the location of the Event, Pharmacology and Physiological Logs. Including saving/printing functions of the software.

**Course Hours:** 9 a.m. until 4:00 p.m.

**Course Attire:** Casual

**Each Course is limited to 10 participants** to assure each participant individual attention and an excellent experience.

---

\*All Materials are included

\*\*Please Bring a Laptop Computer to use for the programming course.

## Simulation Specialty Course 2011 Registration Form:



**Course Fees: Only \$125.00 per course!**  
 Registration Fees have you off your Sim-Education diet?  
**Early Registration Discount--before June 15<sup>th</sup>**

**Send Registration Information and Payment by July 15th, 2011 . \***

Name \_\_\_\_\_

Address \_\_\_\_\_ E-Mail \_\_\_\_\_

City \_\_\_\_\_ State \_\_\_\_\_ Zip \_\_\_\_\_

Phone (    ) \_\_\_\_\_ RN License \_\_\_\_\_

Check all that apply:

**Courses I Plan to Attend**

- \_\_\_\_ July 25 Debriefing
- \_\_\_\_ July 26 Scenario Design
- \_\_\_\_ July 27 Moulage
- \_\_\_\_ July 28 Technology Tips

**Course Fees**

- \$125\* **\$100 if received before June 15th**
- \$125 \* **\$100 if received before June 15th**
- \$125 \* **\$100 if received before June 15th**
- \$125 \* **\$100 if received before June 15<sup>th</sup>**

\*Registration after July 15<sup>th</sup> is \$145.00/course

Total Enclosed                      \$ \_\_\_\_\_

REGISTER BY MAIL	REGISTER ONLINE
<p><b>Please Make Checks payable to:</b>  <b>CSU Research Foundation</b></p> <p>Send Registration &amp; check to:</p> <p>The Rural SimCenter                      ATTN: Simulation Specialty 2011                      560 Cohasset Road                      Chico, CA 95926</p>	<p><b>Register online at:</b>  <a href="http://www.formdesk.com/damazo/specialty">http://www.formdesk.com/damazo/specialty</a></p> <p><b>After you register you can mail a check made out to CSU RESEARCH FOUNDATION to:</b></p> <p style="text-align: center;"><b>The Rural SimCenter</b>  <b>560 Cohasset Road</b>  <b>Chico, CA 95926</b></p> <p><b>Or, you can charge your registration fee to your credit card. Access credit card information at:</b></p> <p><a href="http://www.acteva.com/booking.cfm?bevoid=217661">http://www.acteva.com/booking.cfm?bevoid=217661</a></p>

## Rural SimCenter Courses:

*We are now accredited by the Society for Simulation in Healthcare in the area of education and teaching!*

*We have offered quality educational programs since 2006!*



**Lodging:** There are several motels in the Chico area including Holiday Inn, Best Western and Marriott and others. The Holiday Inn and Best Western Hotel are located within walking distance of the Simulation Center.

**Food:** A complementary continental breakfast and refreshments will be available each day of the conference.

**\*Cancellation Policy:** A full refund—less a \$25.00 processing fee—will be issued if the cancellation is received 2 weeks prior to the course start date. Because participation is very limited, NO REFUNDS will be issued for courses cancelled less than 2 weeks prior to the course start date. We reserve the right to cancel any course for lack of registration or unforeseen events. In such cases a full refund will be issued.

**DIRECTIONS:** From Highway 99 take exit 387A turn west onto Cohasset Road. Turn right at the stoplight onto Cohasset Road. Take the first Right onto Rio Lindo Avenue. Turn left immediately into the Enloe Cohasset Building Parking Lot. Go in the main (Ortho-Trauma) entrance that faces Rio Lindo Avenue and follow the RED signs to the Rural SimCenter.

We are located at 560 Cohasset Road, Chico, CA.

