

## Wimba Tutorial – Creating a Poll in Live Classroom

### Introduction

In Wimba Live Classroom you can also create a new poll. This tutorial will focus on how to create one and post it for your students to take.

### Table of Contents

Getting Started .....	1
Creating a Poll in Wimba Live Classroom.....	3

### Getting Started

1. Sign in to Vista and in the **Teach** tab, open your Wimba Classroom.



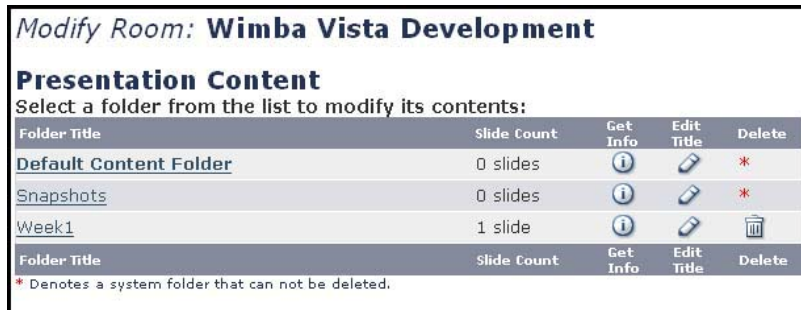
2. Click on **Add & Manage Content** at the top right of the page.



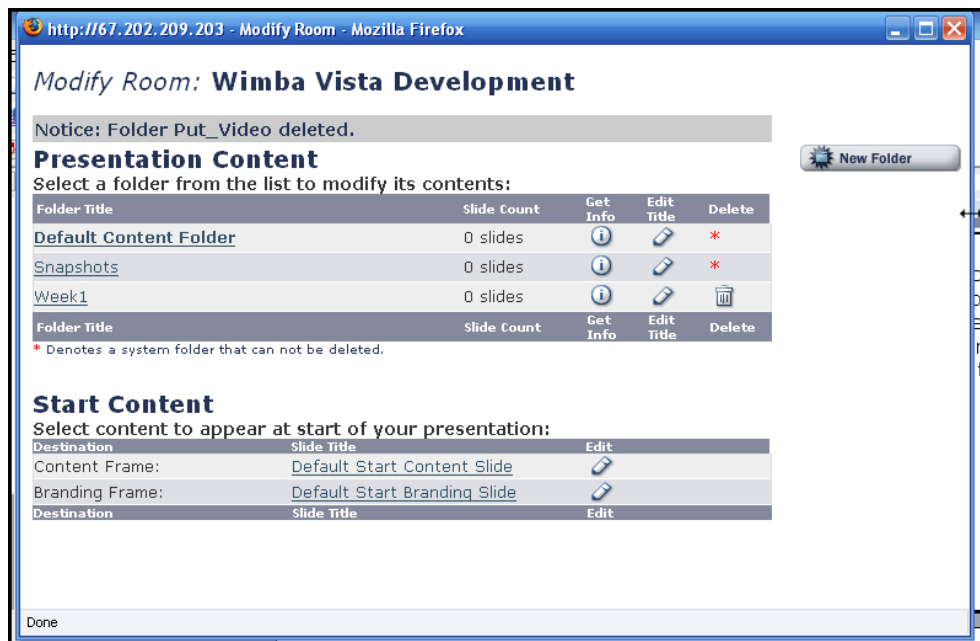
- Click on **Add & Manage Room Content**.



- A new window will open that shows all of the files and folders uploaded to your Wimba Course. We will call this the **Content Room**.



- For this example we are going to make a **new folder**. To do this, you have to enlarge the **Content Room** window so that you can see the button **Make Folder** on the right side. Click on this, add a folder name, and click **Create**.



## Creating a Poll in Wimba Live Classroom

1. From the **Content Room**, click on the folder where the poll will be created.
2. On the far right, click **New Content**. The modify folder page will open for you

**⚠ Warning:** If this is a folder without content in it, you will see the modify folder room without having to click on **New Content**



*Modify Folder: Wimba Vista Development: Folder Name*

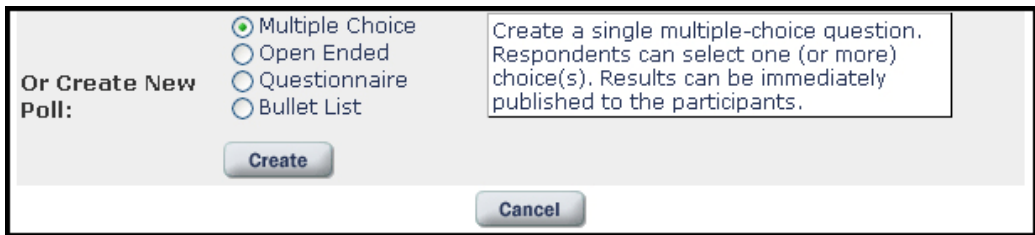
Empty folder selected. Please begin adding content to your folder below.

Upload New Content:    Display this content in the eBoard

Or Add a URL:   
Enter the full URL in the text field above. (URLs will display in a new browser window.)

Or Create New Poll:  Multiple Choice  Open Ended  Questionnaire  Bullet List  
Create a single multiple-choice question. Respondents can select one (or more) choice(s). Results can be immediately published to the participants.

3. At the bottom of the page, select what kind of poll you would like to create. For this example we will select **Multiple Choice**, however there are many choices. Once you have selected the type, click **Create**.



Or Create New Poll:  Multiple Choice  Open Ended  Questionnaire  Bullet List  
Create a single multiple-choice question. Respondents can select one (or more) choice(s). Results can be immediately published to the participants.

4. First, you will need to add a **Title**.



Title:

5. Next, add your **Question**.

**Question:**

6. Now, you need to come up with **Response Choices**. You can have up to eight different responses.

**Response Choices:**

- Yes, I understand perfectly
- Sort of, I still have questions
- No, I don't get it at all
- 
- 
- 
- 
- 

7. Fill out a sentence or two of instructions and a sentence that confirms the students have submitted their answers.

**Messages:**

*Participant instructions*

*Response Confirmation Message (After Response).*

8. Lastly, you can change any preferences including aesthetics. When you are done click on **Save Changes**.

**Preferences:**

- Allow multiple responses
- Publish Individual Responses

Font Color:

Background Color:

**Wimba Classroom Example Text**