

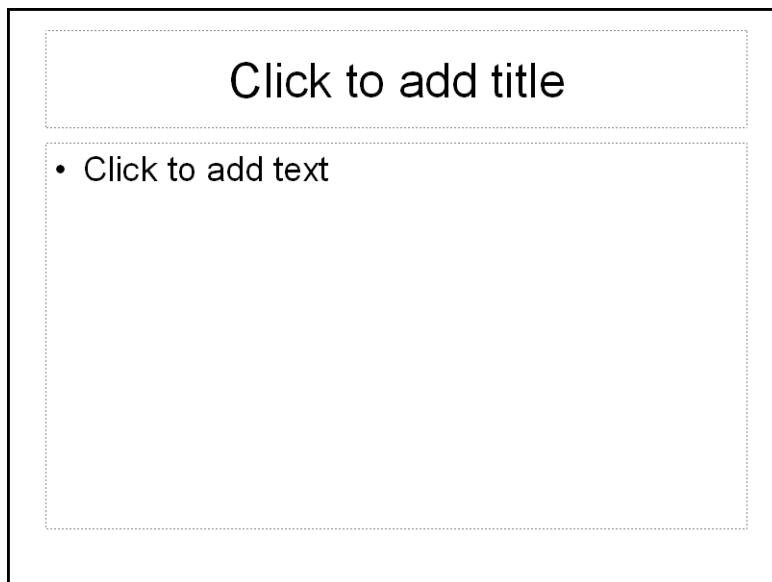
Wimba Live Classroom– Creating PowerPoint Presentations

Introduction

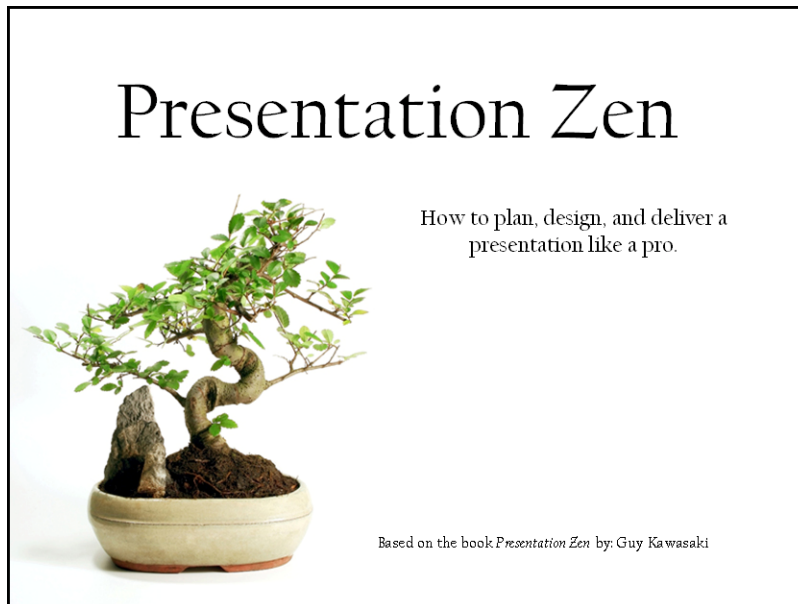
Creating slides to be used with Wimba Live Classroom is slightly different than creating them for face-to-face presentations because Live Classroom changes each slide into a static image (jpg).

PowerPoint Tips

1. Use a standard PowerPoint template.
2. Use the title field in the template because that area will label each slide in Live Classroom with a title.



3. Create a first slide as a “cover slide” with presentation information so it can be in place before the presentation starts.

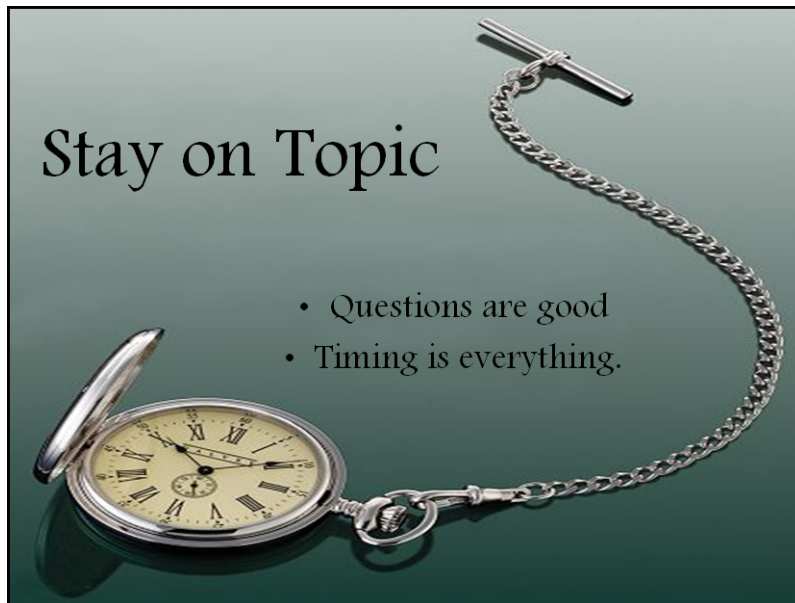


4. Use NO animations, transitions, music, web links or videos. They will all be lost when importing into Live Classroom.
5. Use contrasting colors to create backgrounds and fonts to show clarity.

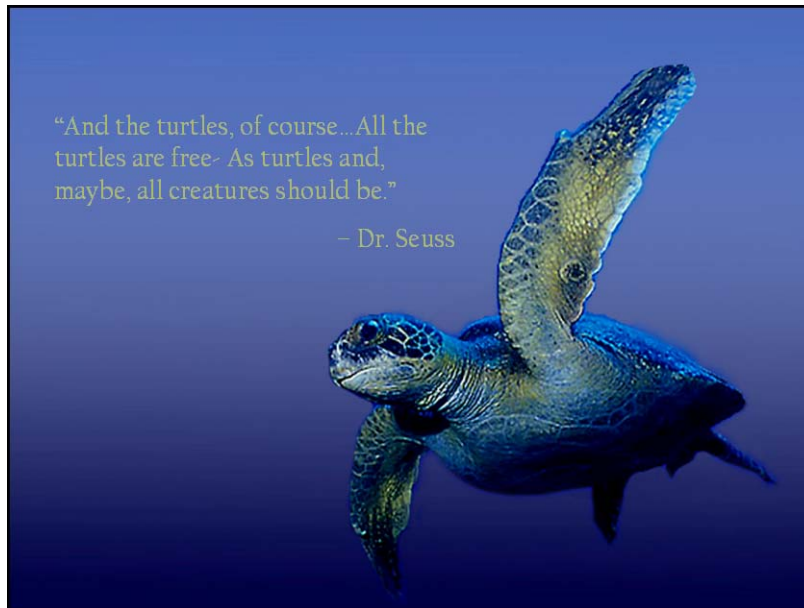


6. Use legible fonts like Verdana or Arial.
7. Use font sizes larger than used for face-to-face presentations.

8. Limit the amount of text per slide. Two to three bullet points are advised.



9. Limit images per slide. One focus image per slide is advised.



10. Pause between slides to allow for latency on attendees' computers.