

New Chairs Presentation

August 17, 2001



BUDGET

Scott G. McNall

Provost and Vice President for Academic Affairs

Arno J. Rethans

Vice Provost for Planning and Resource Allocation

Presentation Outline



- Sources of Operating Funds
- Drivers of Operating Funds
- Allocation of Operating Funds
 - ✓ Overall Process
 - ✓ To Academic Affairs
 - ✓ 01-02 CSU Chico
 - ✓ 01-02 Academic Affairs
 - ✓ AA to Units
 - ✓ Units to Departments
- Questions and Answers

Sources of Operating Funds



- General Funds (State Appropriations)
- Lottery (State Appropriations)
- Continuing Education (Auxiliary Enterprises)
- Grants and Contracts (Research Foundation)
- Advancement (University Foundation)

Drivers of Operating Funds



General Funds (State Appropriations)

Lottery (State Appropriations)

are

enrollment (FTES)

driven

Drivers of Operating Funds



Continuing Education (Auxiliary Enterprises)

(Summer Session; Special Session; Open University; Non-credit Programs; Conferences; Workshops;
Distance Education Initiatives = Satellite Network, Two-way TV; On-line; Video-streaming)

is

enrollment (FTES)

and unit/faculty interest

driven

Drivers of Operating Funds



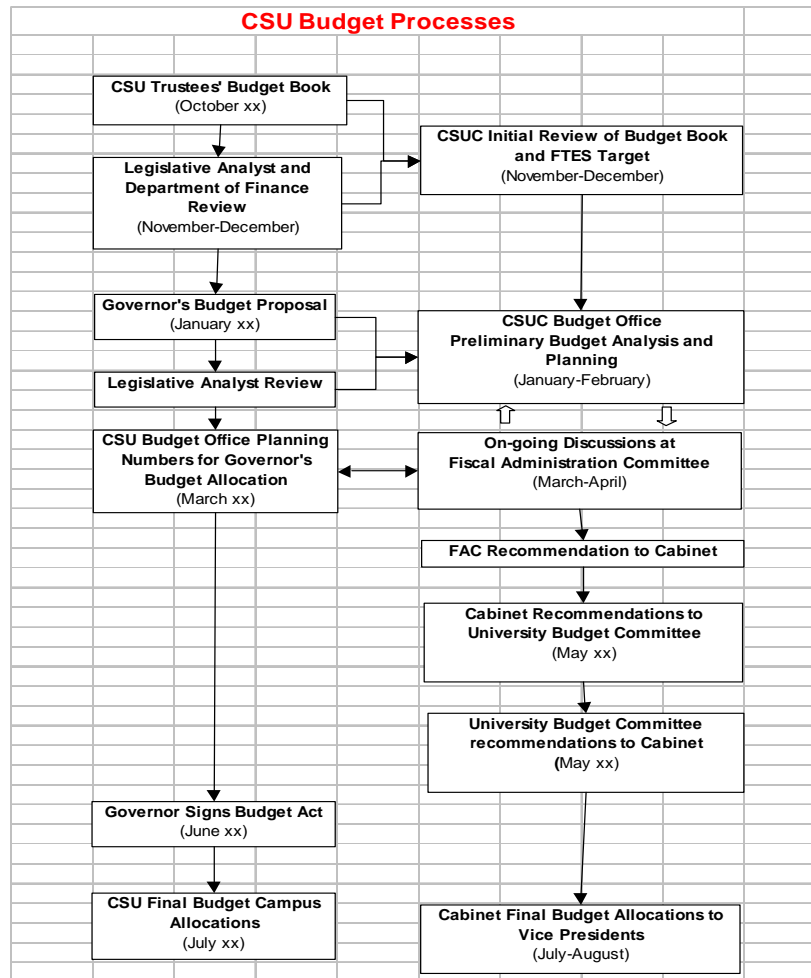
Grants and Contracts (Research Foundation)
are
faculty and staff
driven

Drivers of Operating Funds



Advancement (University Foundation)
is
university and unit
driven

Allocation of Operating Funds Overall Process



July 26, 2001

August 3, 2001

August 17, 2001

September .. 2001

Allocation of Operating Funds

2001-02 CSU Chico

2001-2002 Incremental Campus Budget:

Enrollment Target	14,250
Projected FTES Growth	170
Marginal Cost for enrollment per FTES	\$ 6,749
Financial Aids set-aside per FTES	386
Instructional Equipment per FTES	---
Campus Enrollment Allocation	\$ 1,213,000

Source: CSU Final Budget Allocations

Allocation of Operating Funds to Academic Affairs



Categories in General Fund Allocations to Academic Affairs:

- Faculty Salaries and Wages (50%)
- Non-faculty, Support Services and Management SW (23%)
- Temporary Help (1%)
- Benefits (17%)
- General Operating Expenses (7.7%)
- Work Study and Work Study Matches (1%)
- Redirects and Reserve Contributions

Allocation of Operating Funds

AA to Units



Allocation of Funds within Academic Affairs is a function of:

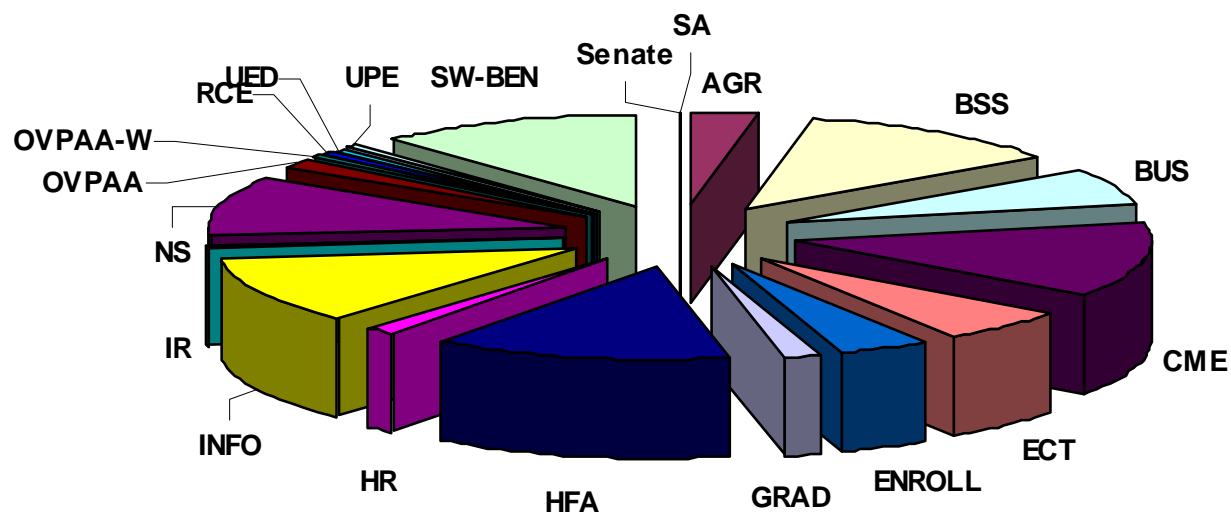
- Unit Historical Performance (FTES, SFR, WTUs)
- Unit Performance on Provost Goals to the Unit
- University and AA Strategic Priorities
- Legislative and CSU Mandates

Allocation of Operating Funds

AA to Units

Academic Affairs Base Allocations 2000-01

\$ 85,214,695.41



Allocation of Operating Funds

AA to Units

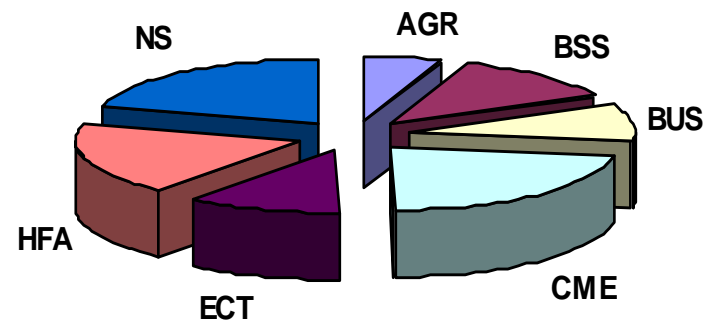
Allocation of Strategic Funds within Academic Affairs is a function of:

- Meeting of FTES Targets
- Use of Previous Strategic Allocations
- Percent Completion of Annual Goals
- Faculty and Staff Development
- Progress on Assessment Plans
- Percent of Faculty in Grants and Contracts
- College/Department Development Efforts
- New Program Development / Use of Information Technology

Allocation of Operating Funds

AA to Units

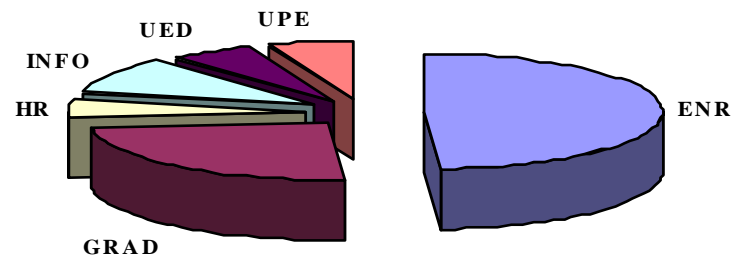
SBA Performance Based Allocations 2000-01
Colleges: \$805,000



Allocation of Operating Funds

AA to Units

SBA Performance Based Allocations 2000-01
Support Units: \$102,000



Allocation of Operating Funds

AA to Units



Collective Goals for 2001 – 2002:

- Program Assessment
- Support of New Faculty
- Year-Round-Operation (YRO)
- Faculty Early Retirement Program (FERP)
- Distance Learning
- Drug and Alcohol Abuse
- Recruit Affirmatively
- Workload
- Telling the CSU, Chico Story

Allocation of Operating Funds

Units to Departments



Academic Affairs provides each unit with base and one-time budgets. Allocation of these funds within units varies considerably across units. We suggest you discuss with your Dean.

Questions and Answers

