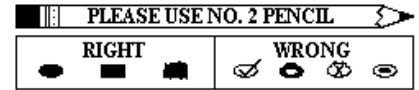




# Survey of Second-Year Faculty

Spring 2005



Please indicate your level of agreement with the following:

	Strongly Disagree	Disagree	Neutral	Agree	Strongly Agree
1. In my first year I had sufficient opportunity for orientation and mentoring.	<input type="radio"/>	<input type="radio"/>	<input type="radio"/>	<input type="radio"/>	<input type="radio"/>
2. I have had sufficient opportunity to exchange classroom visits with colleagues.	<input type="radio"/>	<input type="radio"/>	<input type="radio"/>	<input type="radio"/>	<input type="radio"/>
3. I understand what I must do to get tenure here.	<input type="radio"/>	<input type="radio"/>	<input type="radio"/>	<input type="radio"/>	<input type="radio"/>
4. I am able to develop my career interests at Chico State.	<input type="radio"/>	<input type="radio"/>	<input type="radio"/>	<input type="radio"/>	<input type="radio"/>
5. I am satisfied with my colleagues.	<input type="radio"/>	<input type="radio"/>	<input type="radio"/>	<input type="radio"/>	<input type="radio"/>
6. My need for interdisciplinary interactions is satisfied here.	<input type="radio"/>	<input type="radio"/>	<input type="radio"/>	<input type="radio"/>	<input type="radio"/>
7. My need for intellectual stimulation is satisfied here.	<input type="radio"/>	<input type="radio"/>	<input type="radio"/>	<input type="radio"/>	<input type="radio"/>
8. I feel sufficiently connected to other new tenure-track faculty members.	<input type="radio"/>	<input type="radio"/>	<input type="radio"/>	<input type="radio"/>	<input type="radio"/>
9. My department provides me with a strong sense of community.	<input type="radio"/>	<input type="radio"/>	<input type="radio"/>	<input type="radio"/>	<input type="radio"/>
10. My college provides me with a strong sense of community.	<input type="radio"/>	<input type="radio"/>	<input type="radio"/>	<input type="radio"/>	<input type="radio"/>
11. Senior colleagues are helpful to me.	<input type="radio"/>	<input type="radio"/>	<input type="radio"/>	<input type="radio"/>	<input type="radio"/>
12. My chair gives me adequate professional support.	<input type="radio"/>	<input type="radio"/>	<input type="radio"/>	<input type="radio"/>	<input type="radio"/>
13. My dean gives me adequate professional support.	<input type="radio"/>	<input type="radio"/>	<input type="radio"/>	<input type="radio"/>	<input type="radio"/>
14. I have adequate support for professional travel, equipment, and supplies.	<input type="radio"/>	<input type="radio"/>	<input type="radio"/>	<input type="radio"/>	<input type="radio"/>
15. I can obtain adequate technology and training.	<input type="radio"/>	<input type="radio"/>	<input type="radio"/>	<input type="radio"/>	<input type="radio"/>
16. I can obtain adequate support for professional development.	<input type="radio"/>	<input type="radio"/>	<input type="radio"/>	<input type="radio"/>	<input type="radio"/>
17. I have submitted one or more proposals for external funding.	<input type="radio"/>	<input type="radio"/>	<input type="radio"/>	<input type="radio"/>	<input type="radio"/>
18. I have time for research and Sponsored Programs' workshops.	<input type="radio"/>	<input type="radio"/>	<input type="radio"/>	<input type="radio"/>	<input type="radio"/>
19. Externally funded research counts heavily at the department level.	<input type="radio"/>	<input type="radio"/>	<input type="radio"/>	<input type="radio"/>	<input type="radio"/>
20. Externally funded research counts heavily at the college/university level.	<input type="radio"/>	<input type="radio"/>	<input type="radio"/>	<input type="radio"/>	<input type="radio"/>
21. I am pleased with the preparation and motivation of my students.	<input type="radio"/>	<input type="radio"/>	<input type="radio"/>	<input type="radio"/>	<input type="radio"/>
22. I am happy with Chico and the environs.	<input type="radio"/>	<input type="radio"/>	<input type="radio"/>	<input type="radio"/>	<input type="radio"/>
23. I am satisfied with CSU, Chico's academic reputation.	<input type="radio"/>	<input type="radio"/>	<input type="radio"/>	<input type="radio"/>	<input type="radio"/>
24. I feel pressure from students to lower my standards.	<input type="radio"/>	<input type="radio"/>	<input type="radio"/>	<input type="radio"/>	<input type="radio"/>
25. My department considers teaching the most important professional activity.	<input type="radio"/>	<input type="radio"/>	<input type="radio"/>	<input type="radio"/>	<input type="radio"/>
26. I have 5+ weekly collegial interactions that are more than small talk.	<input type="radio"/>	<input type="radio"/>	<input type="radio"/>	<input type="radio"/>	<input type="radio"/>
27. I am collaborating with one or more of my colleagues in classroom teaching.	<input type="radio"/>	<input type="radio"/>	<input type="radio"/>	<input type="radio"/>	<input type="radio"/>
28. I frequently attend university-sponsored events (lectures, art exhibits, etc.).	<input type="radio"/>	<input type="radio"/>	<input type="radio"/>	<input type="radio"/>	<input type="radio"/>
29. I am finding enough time for scholarly reading (not for lecture preparation).	<input type="radio"/>	<input type="radio"/>	<input type="radio"/>	<input type="radio"/>	<input type="radio"/>
30. I have never been busier.	<input type="radio"/>	<input type="radio"/>	<input type="radio"/>	<input type="radio"/>	<input type="radio"/>
31. In general, my peers are no more productive than I am.	<input type="radio"/>	<input type="radio"/>	<input type="radio"/>	<input type="radio"/>	<input type="radio"/>
32. In my college, there is pressure to connect with the off-campus community.	<input type="radio"/>	<input type="radio"/>	<input type="radio"/>	<input type="radio"/>	<input type="radio"/>
33. I am having difficulty coping with professional pressures.	<input type="radio"/>	<input type="radio"/>	<input type="radio"/>	<input type="radio"/>	<input type="radio"/>
34. I want to make this university my permanent professional home.	<input type="radio"/>	<input type="radio"/>	<input type="radio"/>	<input type="radio"/>	<input type="radio"/>
35. It may be difficult for me to get tenure here.	<input type="radio"/>	<input type="radio"/>	<input type="radio"/>	<input type="radio"/>	<input type="radio"/>

36. Please indicate the number of hours you spend in the following activities during a typical week when classes are in session.

**Teaching-related activities**

(e.g., classroom instruction and research, advising, student contact, assessment)

0	0
1	1
2	2
3	3
4	4
5	5
6	6
7	7
8	8
9	9

**Scholarly-related activities**

(e.g., research, creative activities)

0	0
1	1
2	2
3	3
4	4
5	5
6	6
7	7
8	8
9	9

**Service-related activities**

(e.g., campus committees, K-12, community service, professional organizations)

0	0
1	1
2	2
3	3
4	4
5	5
6	6
7	7
8	8
9	9



37. Please indicate how stressful you find teaching, scholarly, and service-related activities.

	Very Stressful	Somewhat Stressful	Not Very Stressful
Teaching-related activities	<input type="radio"/>	<input type="radio"/>	<input type="radio"/>
Scholarly-related activities	<input type="radio"/>	<input type="radio"/>	<input type="radio"/>
Service-related activities	<input type="radio"/>	<input type="radio"/>	<input type="radio"/>



38. The single thing I'd most like to change about the university (e.g., salary, course load, other) is...

39. The thing I like the best about the university is...

40. How might the university better arrange for new faculty to be comfortable and productive?

If there is anything else you would like to bring to the attention of the provost, please take this opportunity to send him a note, either signed or unsigned, at: Scott McNall, Zip 110. He will read every communication.

Thank you for your time!