

Content Scores: Summary Statistics and t-Test Results

Descriptive Statistics, Content Scores, All

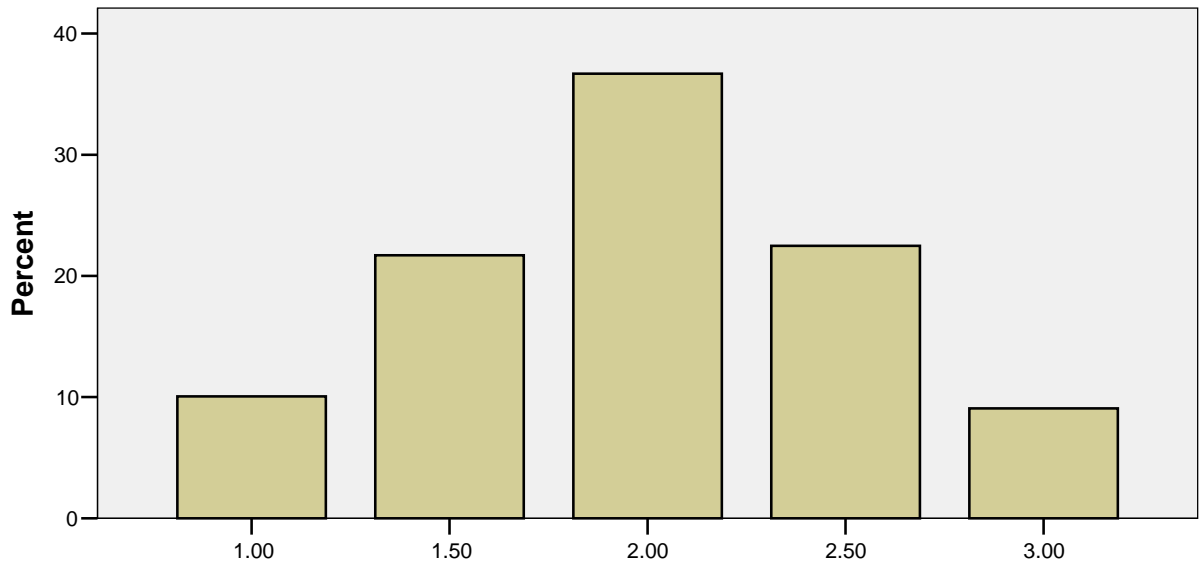
Content2

N	Valid	507
	Missing	40
Mean		1.9941
Median		2.0000
Mode		2.00
Std. Deviation		.54985

Frequencies, Content Scores, All

		Frequency	Percent	Valid Percent	Cumulative Percent
Valid	1.00	51	9.3	10.1	10.1
	1.50	110	20.1	21.7	31.8
	2.00	186	34.0	36.7	68.4
	2.50	114	20.8	22.5	90.9
	3.00	46	8.4	9.1	100.0
	Total		507	92.7	100.0
Missing	System	40	7.3		
Total		547	100.0		

Bar Chart: Content Scores, All GE Writing



1 = Beginning, 2 = Competent, 3 = Accomplished

Descriptive Statistics, Content Scores, FY

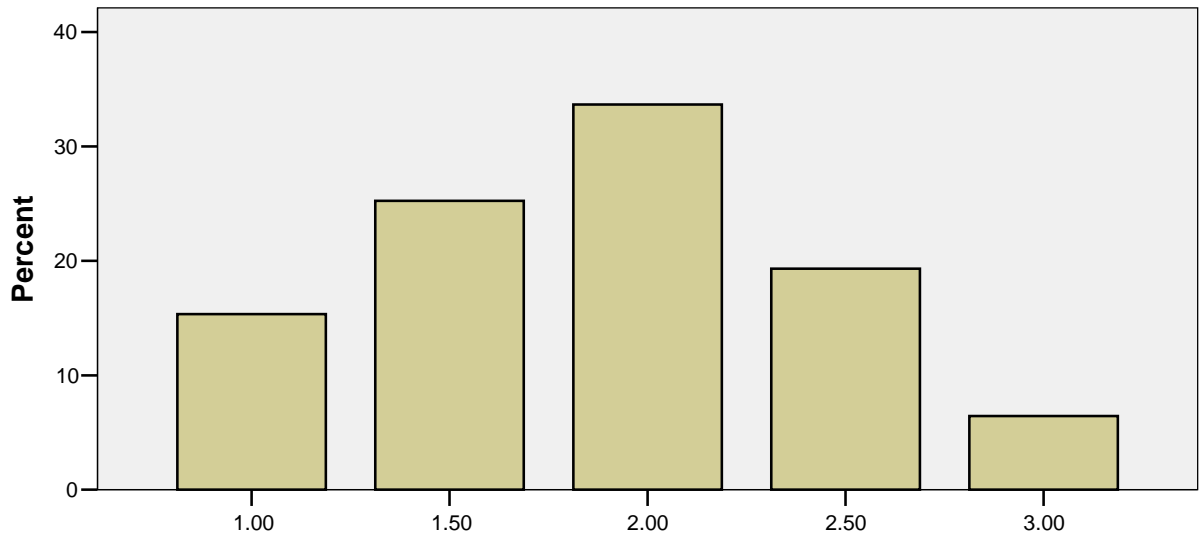
Content2

N	Valid	202
	Missing	21
Mean		1.8812
Median		2.0000
Mode		2.00
Std. Deviation		.56272

Frequencies, Content Scores, FY

		Frequency	Percent	Valid Percent	Cumulative Percent
Valid	1.00	31	13.9	15.3	15.3
	1.50	51	22.9	25.2	40.6
	2.00	68	30.5	33.7	74.3
	2.50	39	17.5	19.3	93.6
	3.00	13	5.8	6.4	100.0
	Total		202	90.6	100.0
Missing	System	21	9.4		
Total		223	100.0		

Bar Chart, Content Scores, FY Students



1 = Beginning, 2 = Competent, 3 = Accomplished

Descriptive Statistics, Content, Sr

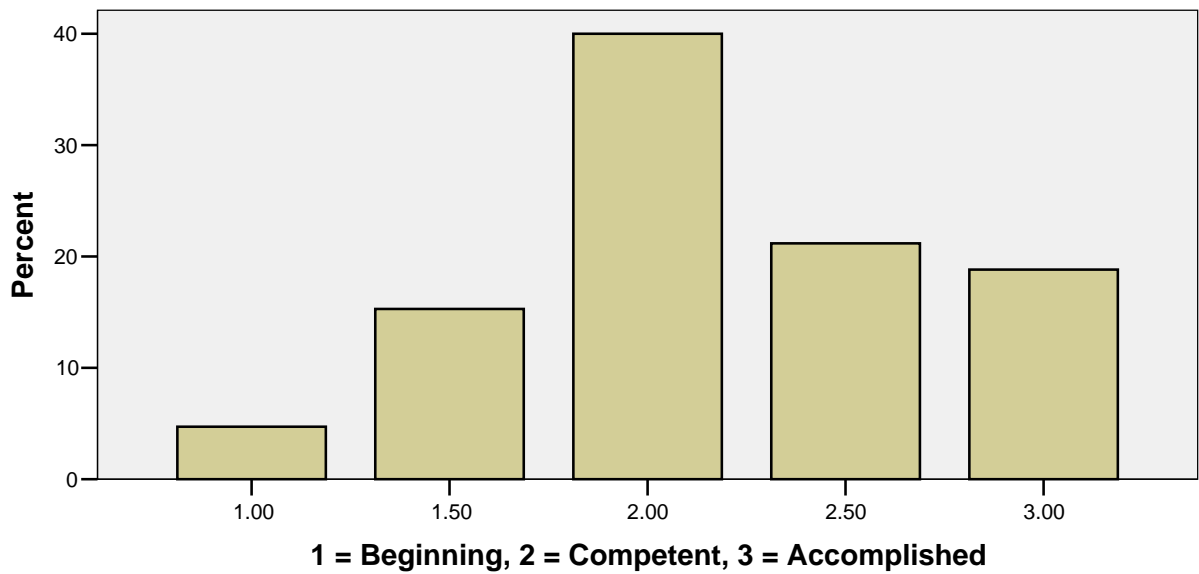
Content2

N	Valid	85
	Missing	3
Mean		2.1706
Median		2.0000
Mode		2.00
Std. Deviation		.54855

Frequencies, Content Scores, Seniors

		Frequency	Percent	Valid Percent	Cumulative Percent
Valid	1.00	4	4.5	4.7	4.7
	1.50	13	14.8	15.3	20.0
	2.00	34	38.6	40.0	60.0
	2.50	18	20.5	21.2	81.2
	3.00	16	18.2	18.8	100.0
	Total	85	96.6	100.0	
Missing	System	3	3.4		
Total		88	100.0		

Bar Chart, Content Scores, Seniors



T-Test: Content Scores, FY vs. Seniors

Group Statistics

CLASS_ST	N	Mean	Std. Deviation	Std. Error Mean
Content2 FY	202	1.8812	.56272	.03959
Sr	85	2.1706	.54855	.05950

Independent Samples Test

		Levene's Test for Equality of Variances		t-test for Equality of Means		
		F	Sig.	t	df	Sig. (2-tailed)
Content2	Equal variances assumed	.075	.784	-4.007	285	.000
	Equal variances not assumed			-4.049	161.620	.000

T-Test: Content Scores, Lower- vs. Upper-Division Courses

Group Statistics

Upper Divison or Lower Division Course	N	Mean	Std. Deviation	Std. Error Mean
Content2 Lower-Division	369	1.9363	.57164	.02976
Upper-Division	138	2.1486	.45373	.03862

Independent Samples Test

		Levene's Test for Equality of Variances		t-test for Equality of Means		
		F	Sig.	t	df	Sig. (2-tailed)
Content2	Equal variances assumed	6.384	.012	-3.923	505	.000
	Equal variances not assumed			-4.353	307.576	.000

Organization Scores: Summary Statistics and t-Test Results

Descriptive Statistics, Organization Scores, All

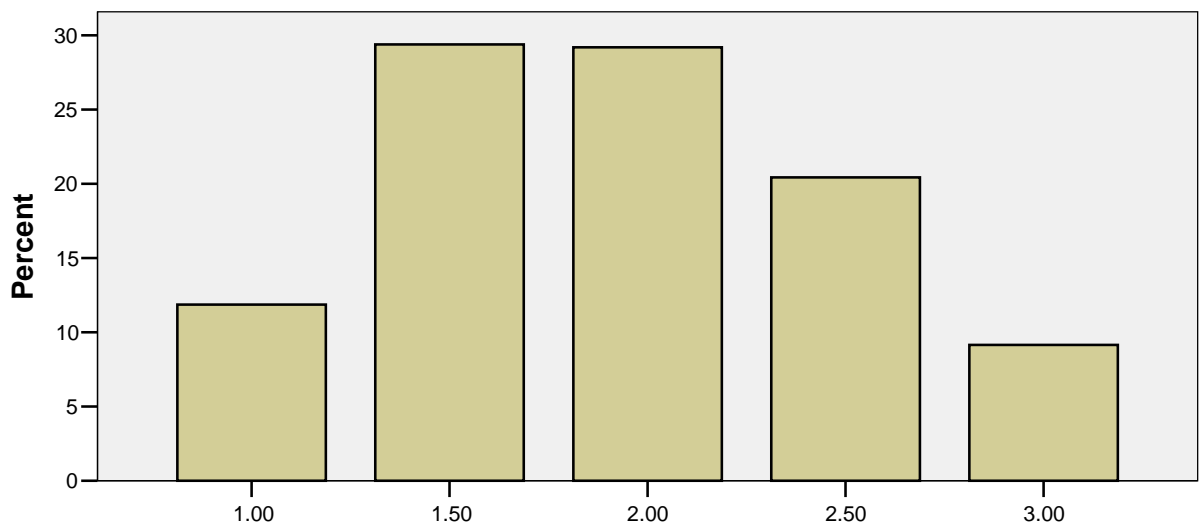
Organization Score, Average across Raters

N	Valid	514
	Missing	33
Mean		1.9280
Median		2.0000
Mode		1.50
Std. Deviation		.57454

Frequencies, Organization Scores, All

		Frequency	Percent	Valid Percent	Cumulative Percent
Valid	1.00	61	11.2	11.9	11.9
	1.50	151	27.6	29.4	41.2
	2.00	150	27.4	29.2	70.4
	2.50	105	19.2	20.4	90.9
	3.00	47	8.6	9.1	100.0
	Total		514	94.0	100.0
Missing	System	33	6.0		
Total		547	100.0		

Bar Chart, Organization Scores, All



1 = Beginning, 2 = Competent, 3 = Accomplished

Descriptive Statistics, Organization Scores, FY

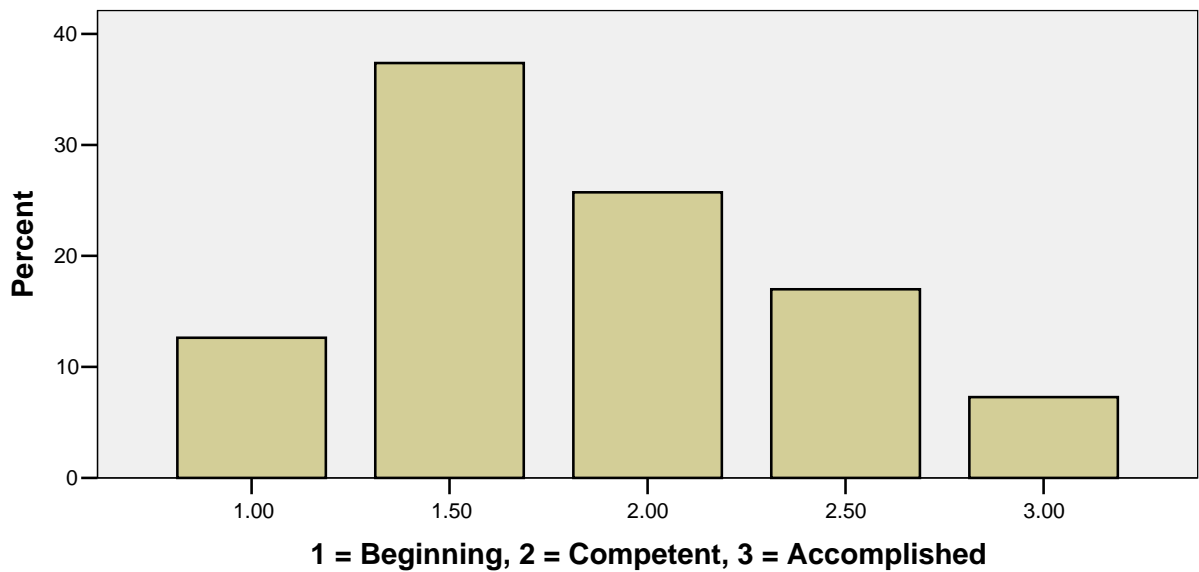
Organization Score, Average across Raters

N	Valid	206
	Missing	17
Mean		1.8447
Median		1.7500
Mode		1.50
Std. Deviation		.55887

Frequencies, Organization Scores, FY

		Frequency	Percent	Valid Percent	Cumulative Percent
Valid	1.00	26	11.7	12.6	12.6
	1.50	77	34.5	37.4	50.0
	2.00	53	23.8	25.7	75.7
	2.50	35	15.7	17.0	92.7
	3.00	15	6.7	7.3	100.0
	Total		206	92.4	100.0
Missing	System	17	7.6		
Total		223	100.0		

Bar Chart, Organization Scores, First-Year Students



Descriptive Statistics, Organization Scores, Sr

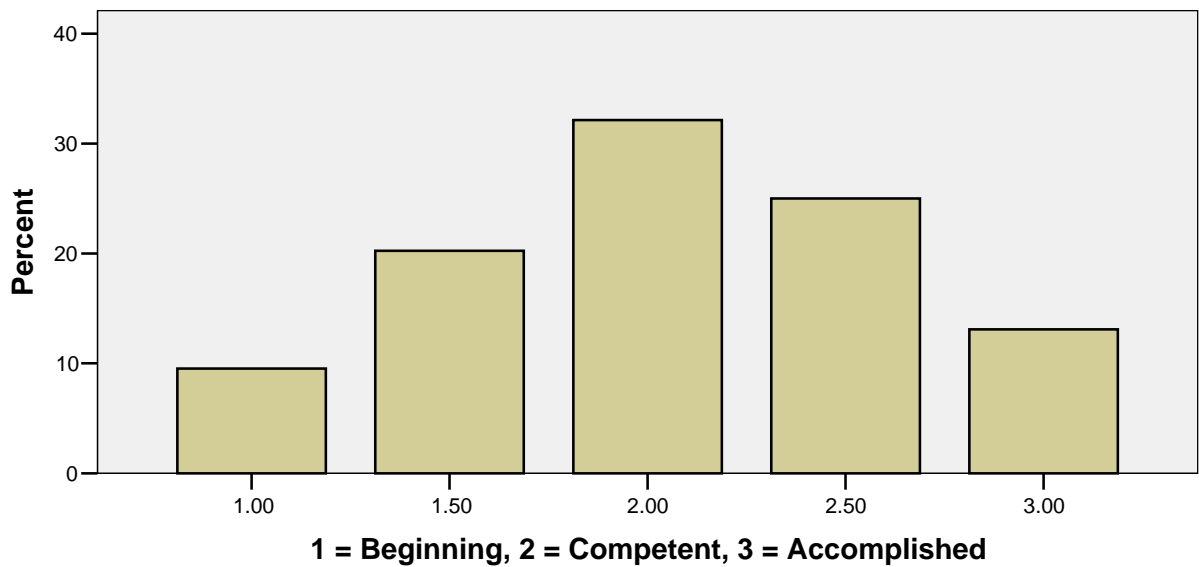
Organization Score, Average across Raters

N	Valid	84
	Missing	4
Mean		2.0595
Median		2.0000
Mode		2.00
Std. Deviation		.58291

Frequencies, Organization Scores, Sr

		Frequency	Percent	Valid Percent	Cumulative Percent
Valid	1.00	8	9.1	9.5	9.5
	1.50	17	19.3	20.2	29.8
	2.00	27	30.7	32.1	61.9
	2.50	21	23.9	25.0	86.9
	3.00	11	12.5	13.1	100.0
	Total		84	95.5	100.0
Missing	System	4	4.5		
Total		88	100.0		

Bar Chart, Organization Scores, Seniors



T-Test: Organization Scores, FY vs. Seniors

Group Statistics

	CLASS_ST	N	Mean	Std. Deviation	Std. Error Mean
Organization Score,	FY	206	1.8447	.55887	.03894
Average across Raters	Sr	84	2.0595	.58291	.06360

Independent Samples Test

		Levene's Test for Equality of Variances		t-test for Equality of Means		
		F	Sig.	t	df	Sig. (2-tailed)
Organization Score, Average across Raters	Equal variances assumed	.011	.915	-2.933	288	.004
	Equal variances not assumed			-2.881	148.438	.005

T-Test: Organization Scores, Lower- vs. Upper-Division Courses

Group Statistics

	L_UCOURSE	N	Mean	Std. Deviation	Std. Error Mean
Organization Score,	Lower Division	376	1.8976	.57921	.02987
Average across Raters	Upper Division	138	2.0109	.55523	.04726

Independent Samples Test

		Levene's Test for Equality of Variances		t-test for Equality of Means		
		F	Sig.	t	df	Sig. (2-tailed)
Organization Score, Average across Raters	Equal variances assumed	3.791	.052	-1.986	512	.048
	Equal variances not assumed			-2.026	253.521	.044

Grammar Scores: Summary Statistics and t-Test Results

Descriptive Statistics, Grammar Scores, All

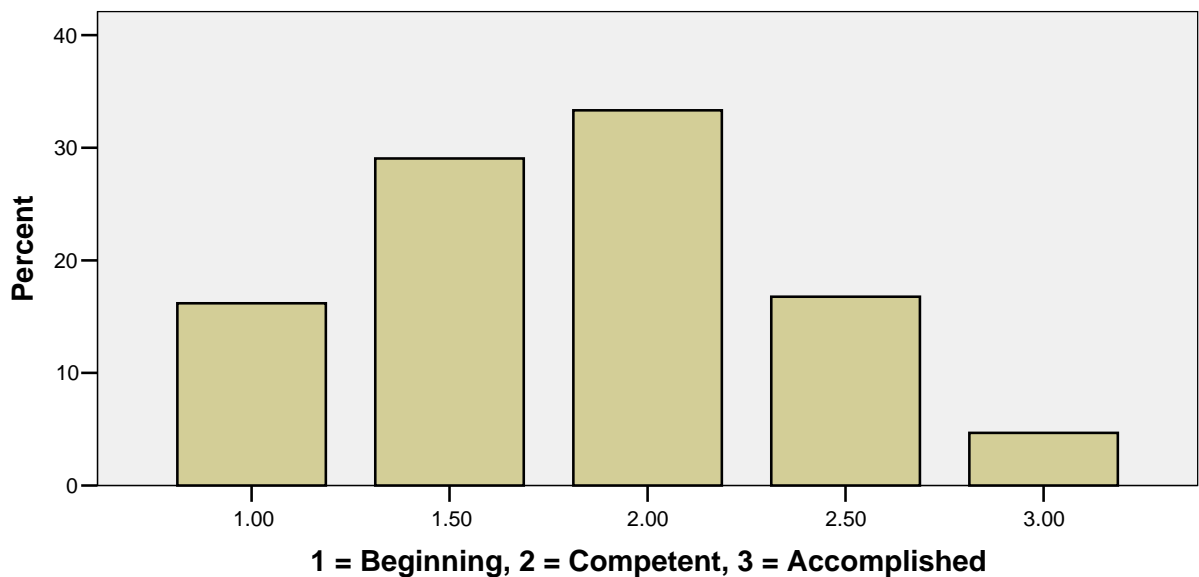
Grammar Scores

N	Valid	513
	Missing	34
Mean		1.8236
Median		2.0000
Mode		2.00
Std. Deviation		.54088

Frequencies, Grammar Scores, All

		Frequency	Percent	Valid Percent	Cumulative Percent
Valid	1.00	83	15.2	16.2	16.2
	1.50	149	27.2	29.0	45.2
	2.00	171	31.3	33.3	78.6
	2.50	86	15.7	16.8	95.3
	3.00	24	4.4	4.7	100.0
	Total		513	93.8	100.0
Missing	System	34	6.2		
Total		547	100.0		

Bar Chart, Grammar Scores, All Students



Descriptive Statistics, Grammar scores, FY

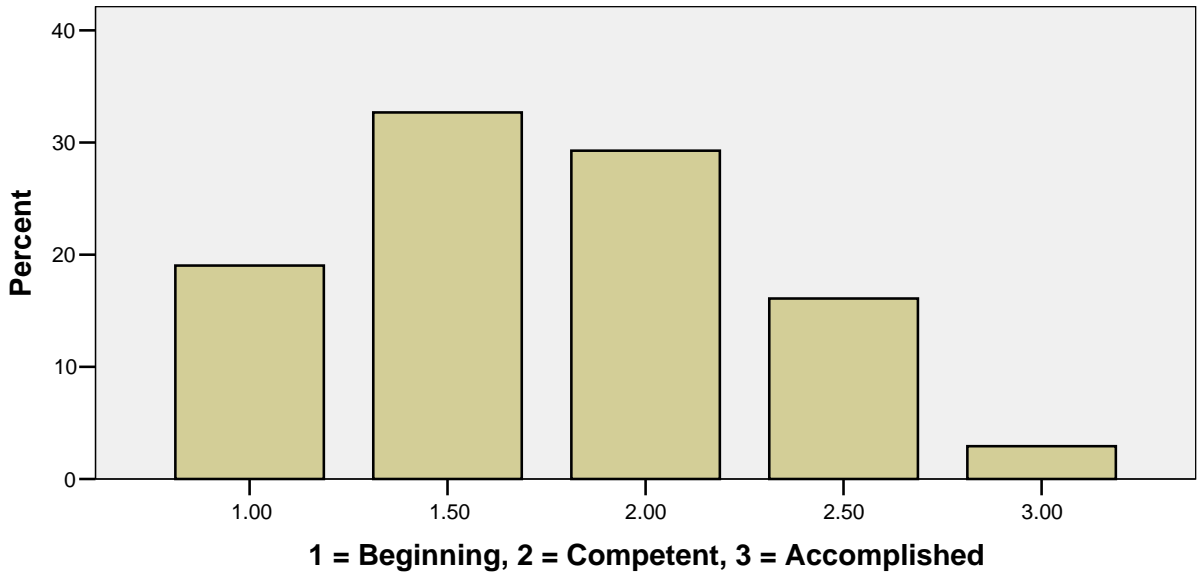
Grammar Scores

N	Valid	205
	Missing	18
Mean		1.7561
Median		1.5000
Mode		1.50
Std. Deviation		.53231

Frequencies, Grammar Scores, FY

		Frequency	Percent	Valid Percent	Cumulative Percent
Valid	1.00	39	17.5	19.0	19.0
	1.50	67	30.0	32.7	51.7
	2.00	60	26.9	29.3	81.0
	2.50	33	14.8	16.1	97.1
	3.00	6	2.7	2.9	100.0
	Total		205	91.9	100.0
Missing	System	18	8.1		
Total		223	100.0		

Bar Chart, Grammar Scores, First Year Students



Descriptive Statistics, Grammar Scores, Sr

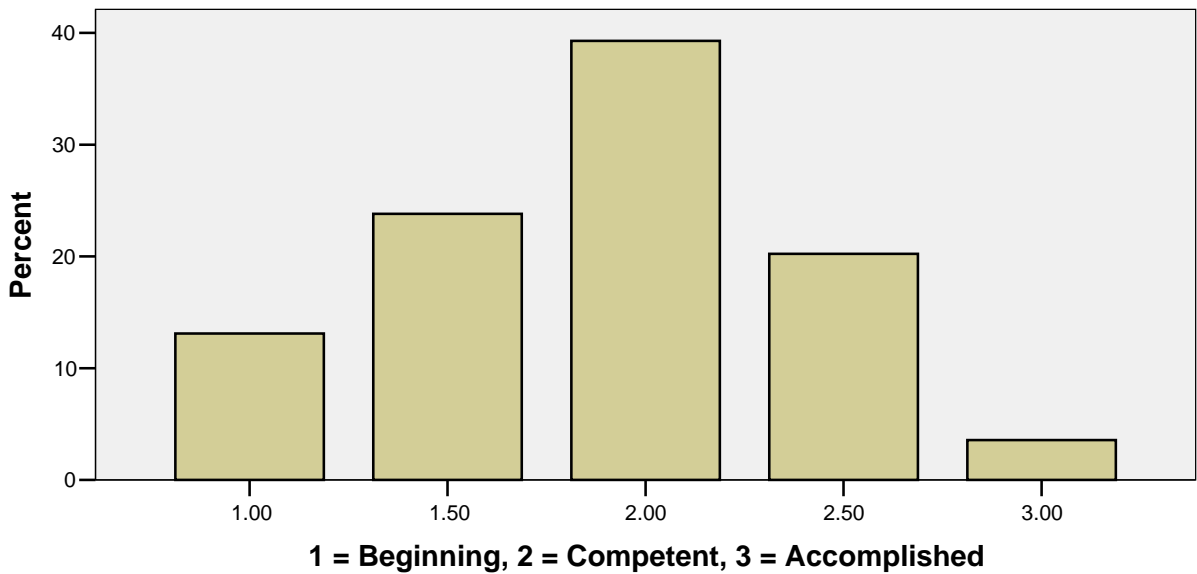
Grammar Scores

N	Valid	84
	Missing	4
Mean		1.8869
Median		2.0000
Mode		2.00
Std. Deviation		.51689

Frequencies, Grammar Scores, Seniors

		Frequency	Percent	Valid Percent	Cumulative Percent
Valid	1.00	11	12.5	13.1	13.1
	1.50	20	22.7	23.8	36.9
	2.00	33	37.5	39.3	76.2
	2.50	17	19.3	20.2	96.4
	3.00	3	3.4	3.6	100.0
	Total		84	95.5	100.0
Missing	System	4	4.5		
Total		88	100.0		

Bar Chart, Grammar Scores, Seniors



T-Test: Grammar Scores, First Year vs. Seniors

Group Statistics

	CLASS_ST	N	Mean	Std. Deviation	Std. Error Mean
Grammar Scores	1	205	1.7561	.53231	.03718
	4	84	1.8869	.51689	.05640

Independent Samples Test

		Levene's Test for Equality of Variances		t-test for Equality of Means			
		F	Sig.	t	df	Sig. (2-tailed)	Sig. (1-tailed)
Grammar Scores	Equal variances assumed	1.108	.293	-1.913	287	.057	.0285
	Equal variances not assumed			-1.936	158.626	.055	.0275

T-Test: Grammar Scores, Lower- vs. Upper-Division Courses

Group Statistics

	Upper Division or Lower Division Course	N	Mean	Std. Deviation	Std. Error Mean
Grammar Scores	Lower Division	387	1.8204	.54170	.02754
	Upper Division	126	1.8333	.54037	.04814

Independent Samples Test

		Levene's Test for Equality of Variances		t-test for Equality of Means		
		F	Sig.	t	df	Sig. (2-tailed)
Grammar Scores	Equal variances assumed	.190	.663	-.233	511	.816
	Equal variances not assumed			-.233	212.802	.816