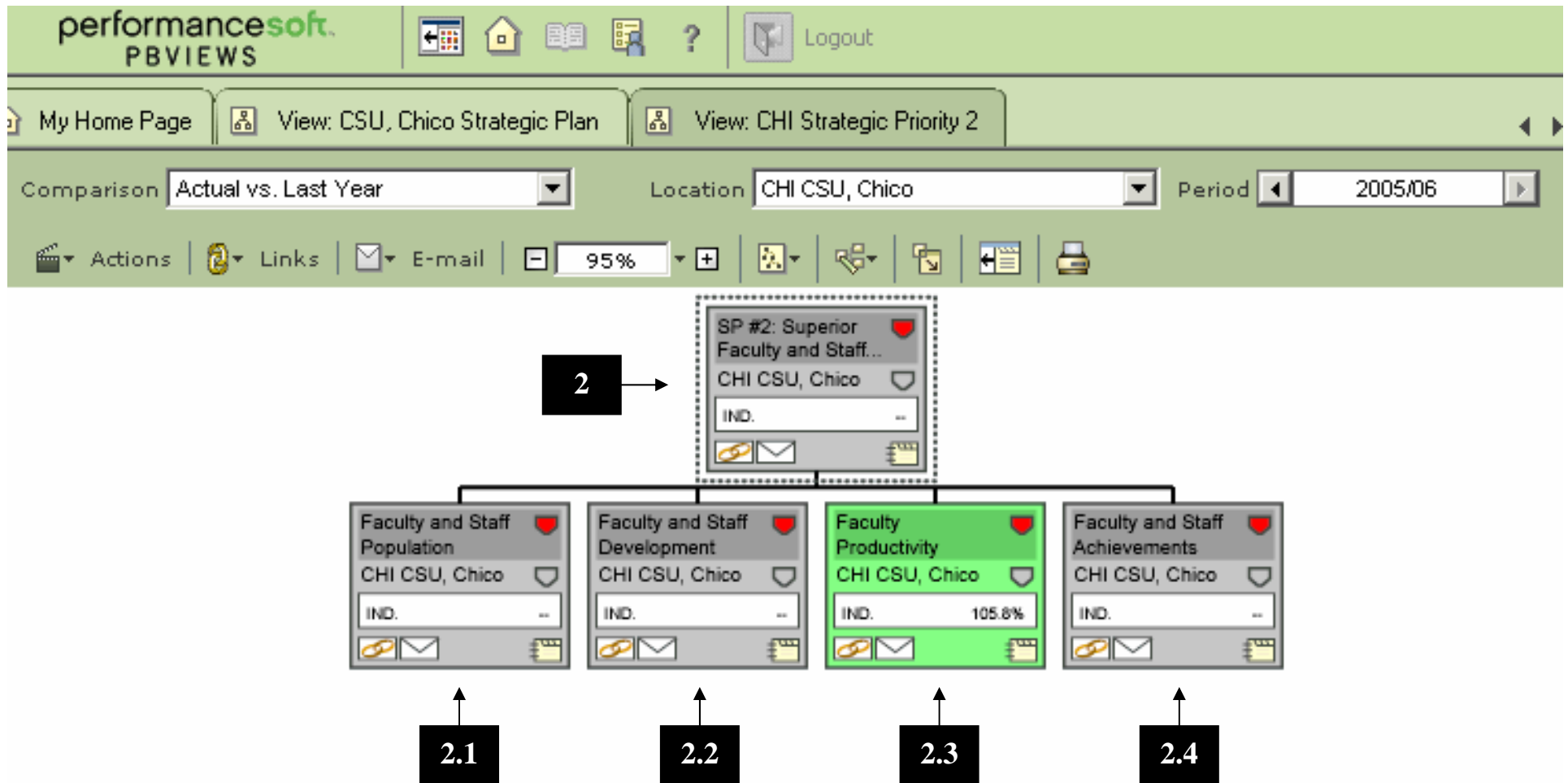
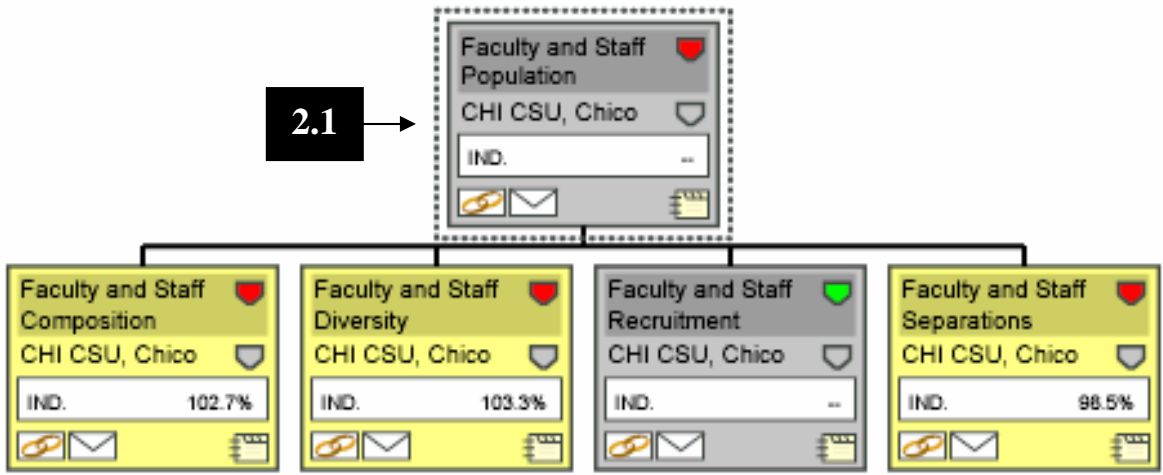


Pbviews is an administrative tool designed for organizations that want a comprehensive view of their performance. In this **view**, performance measures are linked to the organization's strategic objectives and displayed in a hierarchical structure similar to an organization chart.

Below is the second level view of the Chico performance measurement system showing the elements of the university's [strategic priority #2](#): superior faculty and staff resources.



2.1 →



performance soft.
PBVIEWS

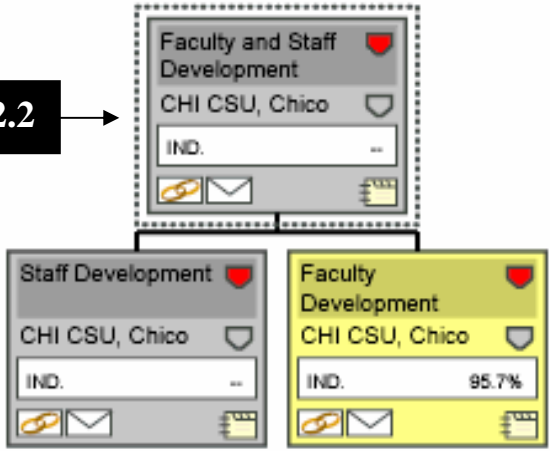
Logout

My Home Page | View: CSU, Chico Strategic Plan | View: CHI SP2 - Superior Faculty & Staff / Develop

Comparison: Actual vs. Last Year | Location: CHI CSU, Chico | Period: 2005/06

Actions | Links | E-mail | 95% | [Icons]

2.2



2.3 →

Faculty Productivity
CHI CSU, Chico
IND. 105.8%

Faculty Workload
CHI CSU, Chico
IND. 105.8%

performance soft.
PBVIEWS

Logout

My Home Page | View: CSU, Chico Strategic Plan | View: CHI SP2 - Superior Faculty & Staff / Achieve...

Comparison: Actual vs. Last Year | Location: CHI CSU, Chico | Period: 2005/06

Actions | Links | E-mail | 95% | [Icons]

2.4

