

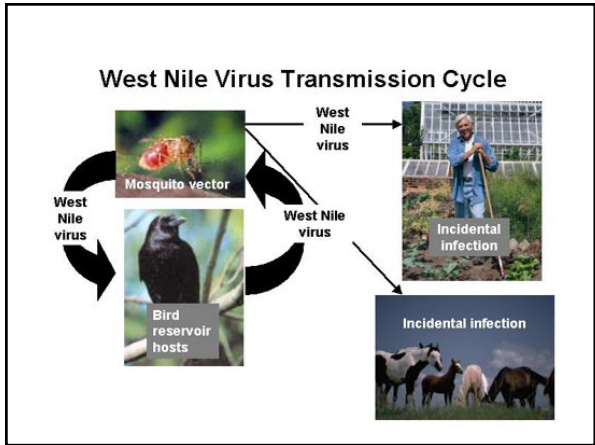
Background Information

1. First isolated in West Nile district, Uganda, 1937
2. Commonly found in humans and birds and other vertebrates in Africa, Eastern Europe, West Asia, and the Middle East, but has not previously been documented in the Western Hemisphere

CDC & P Video Update:
http://video.cdc.gov/ramgen/phppo/od/westnile/westnile_nocapt_8-8-2002.rm

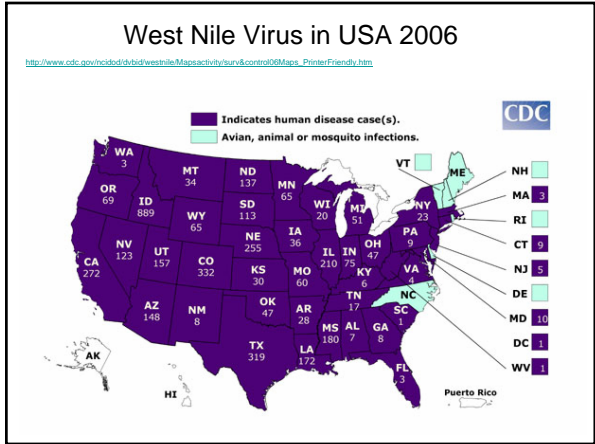
WNV Transmission

- mosquitoes feeding on birds infected with the West Nile virus
- Infected mosquitoes then bite humans or animal for a blood meal
- Needles sticks
- Breast milk
- blood products and organ transplant



West Nile Outbreaks

1951-1954, 1957	Israel
1962	France
1974	South Africa
1996	Romania
1998	Italy
1999	Russia
1999-2000	United States
2000	Israel
2000	France
2001-2002	United States



Signs and Symptoms & Treatment

1. Asymptomatic or mild dengue-like illness
2. Fever, lymphadenopathy, headache, abdominal pain, vomiting, rash, conjunctivitis
3. Incubation period usually 5 (3) to 15 days (this is the period when the virus is reproducing in the body and the body is preparing to launch an attack against the pathogen)
4. CNS involvement and death in minority of cases. Usually people with weakened immune systems.
5. No treatment.

Prevention

- preventing young children from becoming infected is an issue for each school district.
- children should be taught about the lifecycles, preventive measures such as wearing long sleeves, staying indoors during dusk and dawn, and using insect repellent recommended by their pediatricians.
- A modified drawing of a mosquito may be used for younger children to color.
- CDC & P Video Clip:
<http://www.cdc.gov/ncidod/dvbid/westnile/psa.htm>
- Children's Site:
http://www.bam.gov/sub_diseases/diseases_westnile.html