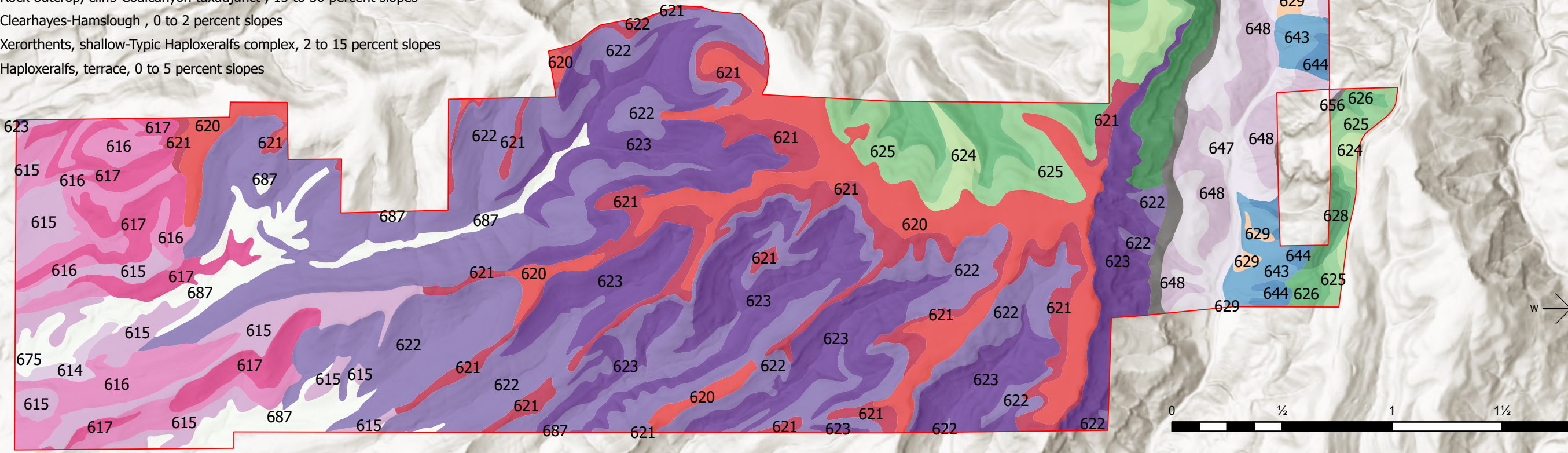


BCCER SOILS

- Big Chico Creek Ecological Reserve
- 614 - Doemill-Jokerst , 0 to 3 percent slopes
- 615 - Doemill-Jokerst , 3 to 8 percent slopes
- 616 - Jokerst-Doemill-Typic Haploxeralfs , 8 to 15 percent slopes
- 617 - Jokerst-Doemill-Typic Haploxeralfs , 15 to 30 percent slopes
- 620 - Doemill-Jokerst-Ultic Haploxeralfs, thermic complex, 3 to 8 percent slopes
- 621 - Doemill-Jokerst-Ultic Haploxeralfs, thermic complex, 8 to 15 percent slopes
- 622 - Xerorthents, shallow-Typic Haploxeralfs-Rock outcrop, cliffs complex, 15 to 30 percent slopes
- 623 - Xerorthents, shallow-Typic Haploxeralfs-Rock outcrop, cliffs complex, 30 to 50 percent slopes
- 624 - Ultic Haploxeralfs, mesic-Rockstripe complex, 2 to 15 percent slopes
- 625 - Ultic Haploxeralfs, mesic-Rockstripe complex, 15 to 30 percent slopes
- 626 - Ultic Haploxeralfs-Rockstripe-Rock outcrop, cliffs ,30 to 50 percent slopes
- 628 - Rockstripe-Ultic Haploxeralfs-Rock outcrop, cliffs , 70 to 100 percent slopes
- 629 - Slideland gravelly loam, 3 to 15 percent slopes
- 630 - Slideland gravelly loam, 15 to 30 percent slopes
- 631 - Slideland gravelly loam, 30 to 50 percent slopes
- 639 - Ultic Haploxeralfs, sandstone, 30 to 50 percent slopes
- 641 - Ultic Haploxeralfs, sandstone, 70 to 100 percent slopes
- 642 - Chinacamp gravelly loam, 3 to 15 percent slopes
- 643 - Chinacamp gravelly loam, 15 to 30 percent slopes
- 644 - Chinacamp gravelly loam, 30 to 50 percent slopes
- 645 - Chinacamp gravelly loam, 50 to 70 percent slopes
- 647 - Coalcanyon taxadjunct very gravelly loam, 15 to 30 percent slopes
- 648 - Coalcanyon taxadjunct very gravelly loam, 30 to 50 percent slopes
- 649 - Coalcanyon taxadjunct very gravelly loam, 50 to 70 percent slopes
- 656 - Rock outcrop, cliffs-Coalcanyon taxadjunct , 15 to 50 percent slopes
- 675 - Clearhayes-Hamslough , 0 to 2 percent slopes
- 687 - Xerorthents, shallow-Typic Haploxeralfs complex, 2 to 15 percent slopes
- 733 - Haploxeralfs, terrace, 0 to 5 percent slopes



Sources: Esri, NASA, NGA, USGS, FEMA, USDA, BCCER GIS

NAD 1983 (2011) StatePlane California II FIPS 0402 (US Feet)

MELLO - BCCER GIS - 2025