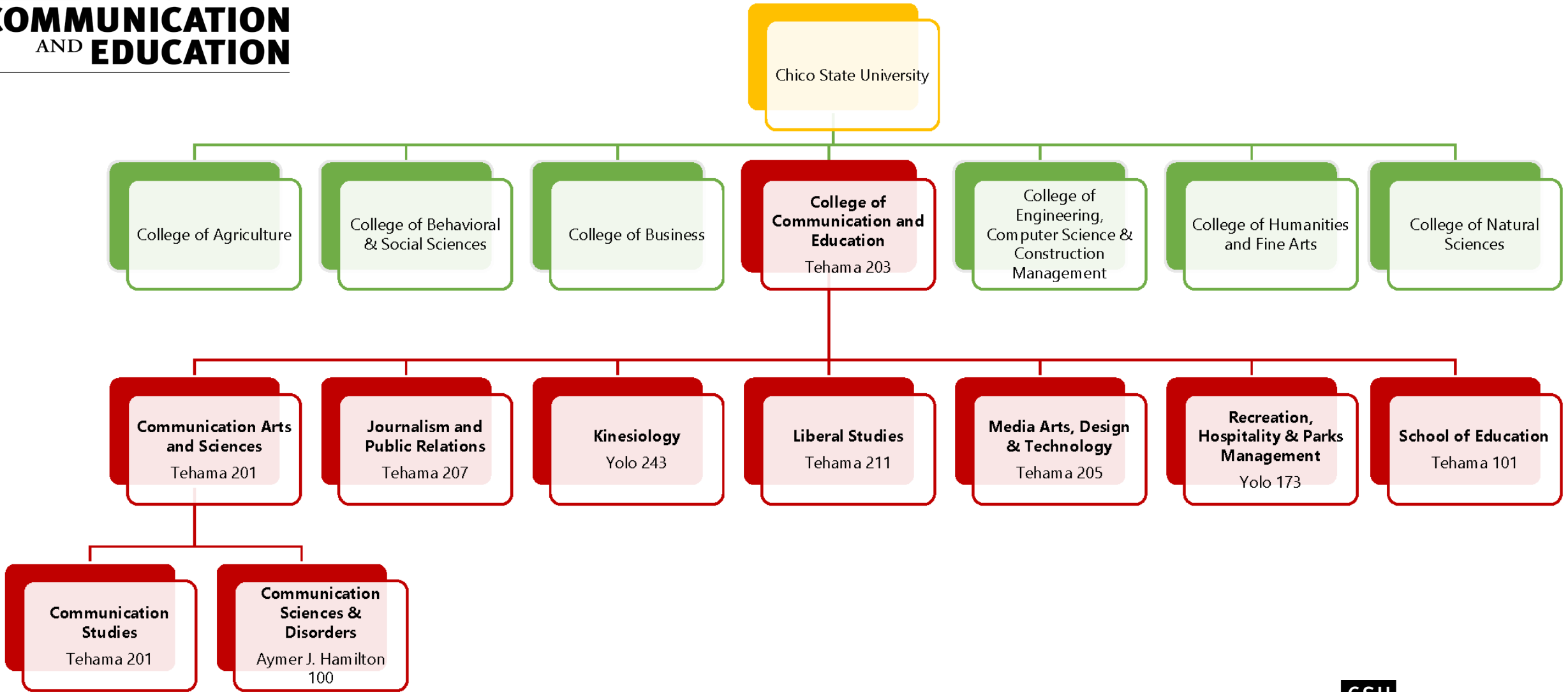




# Temporary Faculty Workshop

# Agenda

- **Dean's Welcome**
- **Introductions**
- **College Resources and Support**
- **Temporary Faculty Evaluation Overview**
- **Developing Your Supplemental Evidence file**
- **Brainstorm Activity**
- **Q&A and Next Steps**





College Resources and Support

# Faculty and Staff Resources

- FPPP
- CME Handbook
- Appendix 9
- Exemplars
- Binder and Tabs



# Temporary Faculty Evaluation Overview

- When
- Where
- How
- By Whom



---

COLLEGE OF

**COMMUNICATION**  
AND **EDUCATION**

---

**Developing Your Supplemental  
Evidence file**



## SUPPORT MATERIALS

- Curriculum Vita/Resume,
- Teaching Philosophy
- Summaries of SETs
- Copies of current syllabi for courses taught
- Descriptions of student assignments and assessments
- Additional materials that demonstrate currency
- Non-teaching Work
- Contributions to strategic plan and goals

# ADDITIONAL SUGGESTIONS AND TIPS

- Select and reflect
- Consult with your chair and department
- Visit the [Supplemental Evidence Excerpts](#) on the CME website
- Take time to create your first file
- Be strategic in your choices



---

COLLEGE OF

**COMMUNICATION**  
AND **EDUCATION**

---

**Questions?**



Thank you!

Contact: [dsummers@csuchico.edu](mailto:dsummers@csuchico.edu)