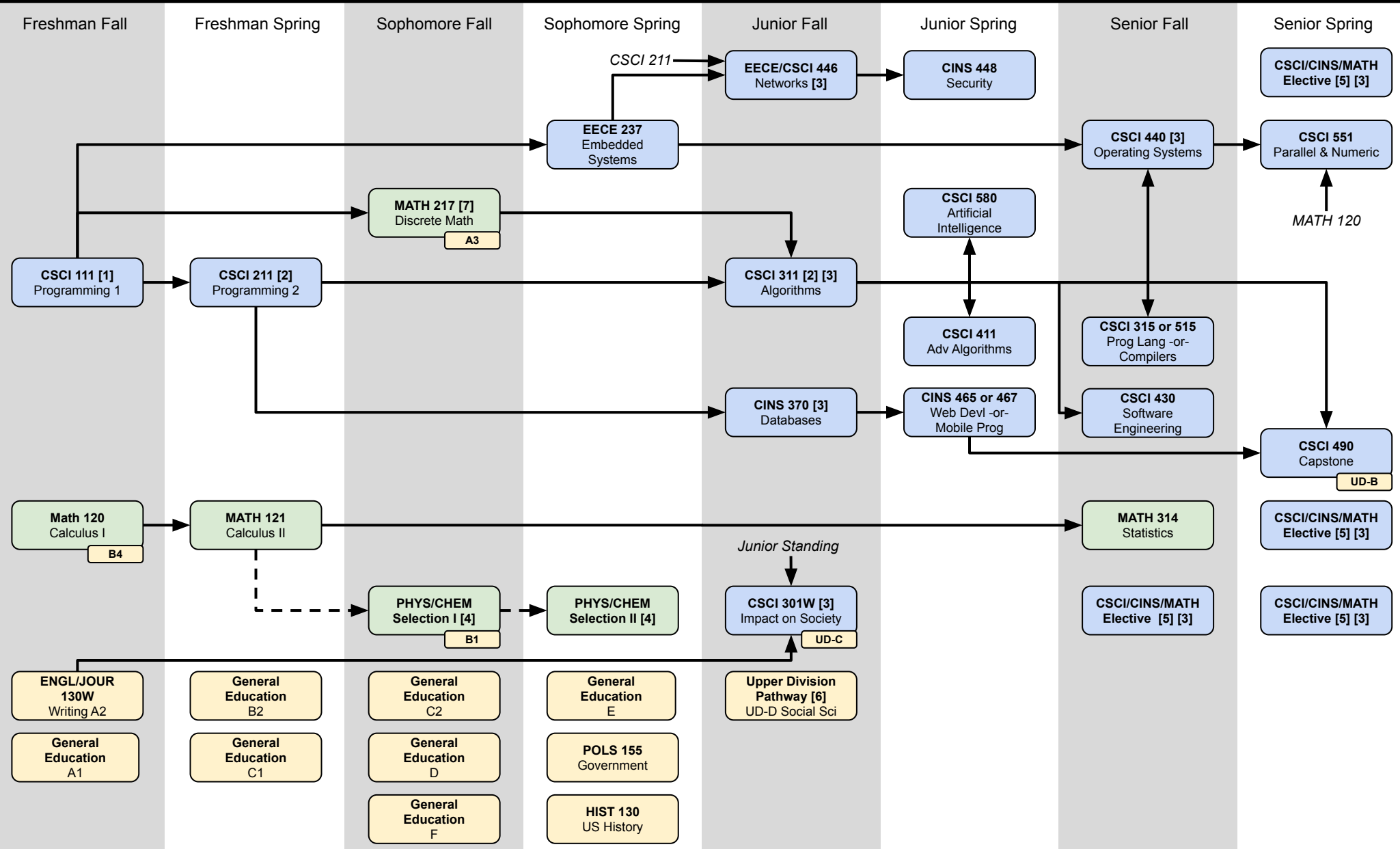


CSCI Flow (Transfer Students)



[1] CSCI 111 requires calculus readiness (MATH 119, MATH 116+118, high school equivalent, community college equivalent, or a proctored test score ≥ 76 on the ALEKS PPL assessment).

[2] We recommend taking CSCI 111, CSCI 211, and CSCI 311 in consecutive semesters.

[3] You must complete CSCI 111, CSCI 211, MATH 120, and MATH 217 with a C or better before you can take any upper division CSCI and CINS course (courses with numbers ≥ 300).

[4] Choose any two from: PHYS 204A, PHYS 204B, CHEM 107, CHEM 108, CHEM 111, CHEM 112. NOTE: cannot take both CHEM 107 and CHEM 111.

[5] 11 units selected from: upper-division CSCI/CINS courses, EECE 555, and/or upper-division MATH courses that meet a requirement for the Minor in Mathematics.
A maximum of 3 units maybe taken for credit/no credit grading. Consider CSCI 300, CSCI 389, or CSCI 400 if you need one or two units. Verify each elective's prerequisite courses.

[6] This class (or a minor class if you have a minor) must be a writing intensive class (W) to meet the upper division Graduation Writing Assessment Requirement (GWAR).

[7] May be taken concurrently with CSCI 111. Prerequisite is MATH 119 (or equivalent).

GE NOTE: Your GE classes must include 1 Global Culture (GC), 1 United States Diversity (USD), 1 upper division Writing (W) plus ENGL/JOUR 130W and CSCI 301W (transfers excused from 4th W class).

→ Arrows represent prerequisite classes. Must take the class on the left before you take the class on the right. All CSCI and CINS prerequisite must be completed with a C or higher.

- - - - - Dashed arrows represent potential prerequisite classes.

Small boxes represent a course required for the major that also meets a General Education (GE) requirement (the requirement is listed in the box).

Revised 01SEP2022