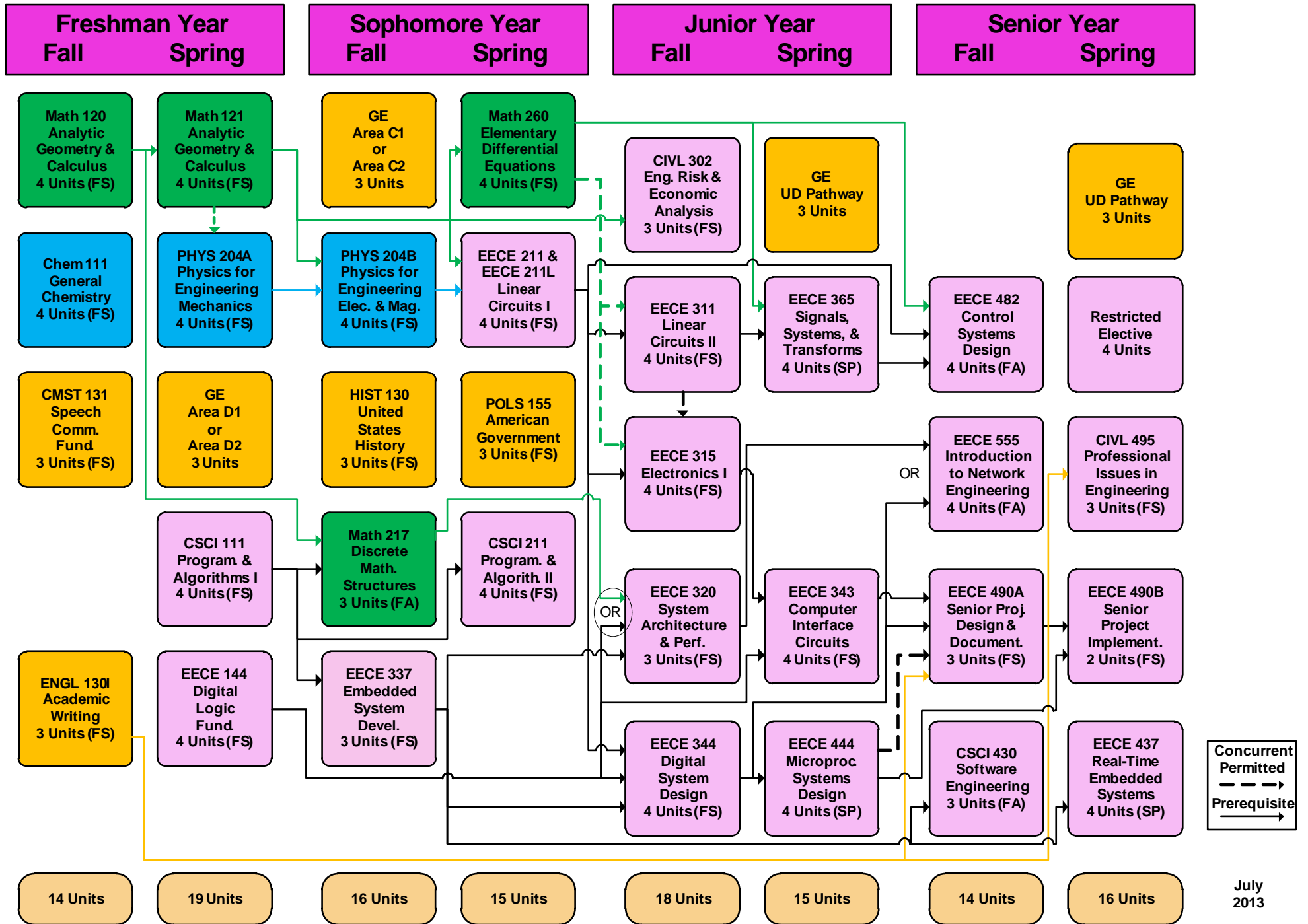


California State University, Chico Department of Electrical and Computer Engineering

2013/2014 Curriculum BS in Computer Engineering



July 2013

Student ID: _____ Student Name: _____ Advisor Signature: _____

Student Name: _____ ID#: _____

Lower-Division General Education (GE) Breadth Courses for CMPE Majors

Breadth Requirement	Completed**	Course Prefix/No.	U.S. Diversity (USD)**	Global Cultures (GC)**	Writing Intensive (WI)**
Area A1, Oral Communication		CMST 131			
Area A2, Written Communication		ENGL 130I			✓
Area B2, Life Sciences		PHYS 204B			
Area C (Arts & Humanities)					
Area D (Social Sciences)					

** A minimum of 1 U.S. Diversity (USD), 1 Global Cultures (GC), and 3 Writing Intensive (WI, *required of students entering Fall 2012 and later*) courses are required. Check (✓) the Completed box when the course is done. Other GE breadth and depth requirements are either waived or fulfilled by substitutions with required major courses.

Area	Diversity Studies	Ethics, Justice & Policy	Food Studies	Gender & Sexuality Studies	Global Development Studies	Great Books & Ideas	Health & Wellness	International Studies	Science, Technology & Values	Sustainability
C Arts/ Humanities	Any foreign language class, including American Sign Language, can be used to fulfill the lower-division Area C requirement.									
	ARTH 130 ^{USD} KINE 152 THEA 252 ENGL 264 ^{USD/WI} HIST/AIST 230 ^{USD} RELS/MCGS 224 ^{USD(F)} RELS/MJIS 204 ^{USD/WI(S)}	ENGL 203 HUMN 220 THEA 252 CHST/HIST 135 ^{USD} PHIL 110 RELS 100	HUMN 281 ^{WI} PHIL 104 RELS 180	ARTH 130 ^{USD} ARTS 100 ^{GC} ENGL 203 ENGL 261 HUMN 224 ^{GC(F)} HUMN/FLNG/CHST 254 ^{USD(S)} RELS/WMST 275 ^{GC(WI)}	ARTH 104 ^{GC} MUSC 290 ^{GC} THEA 251 ENGL 258 ^{WI} LAST 120 RELS 202 ^{GC/} HIST/MEST 261 ^{GC(F)} RELS 212 ^{GC(S)}	MUSC 292 THEA 110 ENGL 260 PHIL 101 RELS 110 ^{GC}	ARTS 100 ^{GC} KINE 152 THEA 112 ^{USD} ITAL 260 PHIL 104 RELS 180	ARTH 110 (F) ARTH 120 (S) MUSC 290 ^{GC} THEA 251 HUMN 288 ^{WI} PHIL 109 RELS/MJIS 205 ^{USD(F)} RELS 212 ^{GC(S)}	APCG 110 THEA 271 PHIL 204 (F) RELS 241 (S) TECH 182	CMGT 275 THEA 252 ENGL/AIST 252 ^{USD} PHIL 129 RELS 247
D Social Sciences	GEOG 102 ^{GC} MCGS 155 ^{USD/WI} PSYC 151 AFAM 170 ^{USD} GEOG 105 ^{USD} SOC/HIST 157 ^{USD(F)} SOC/AIST 152 ^{USD(S)}	ECON 103 MCGS 155 ^{USD/WI} POLS 112 (F) POLS 250 (S) ANTH 116 ^{GC} SOC 100 SWRK 170	ABUS 101 PSYC 151 SOC 100 ANTH 112 ^{GC} ECON 101 GEOG 105 ^{USD}	HCSV 265 JOUR/WMST 211 SOC/WMST 230 ANTH 140 ^{GC} SOC 227 WMST 170 ^{USD}	ANTH/AIST 261 ^{USD(F)} ANTH/AIST 268 ^{GC(S)} POLS 102 ^{GC} WMST 233 ^{GC} ECON 102 HIST 103 LAST 110 ^{GC}	AIST 170 ^{USD} HIST 101 ^{GC} SOC 100 ANTH 112 ^{GC} GEOG 106 ^{USD} POLS 101	ANTH 113 ^{GC} HCSV 265 NFSC 200 ^{USD/WI} ANTH 140 ^{GC} HIST 102 ^{GC} PSYC 152	ANTH 113 ^{GC} ASST/AIST 110 ^{GC} GEOG 102 ^{GC} ECON 102 HIST 102 ^{GC} LAST 110 ^{GC}	GEOG 103 SOC 100 TECH 180 ANTH 140 ^{GC} HIST 102 ^{GC} JOUR 210 ^{USD}	GEOG 102 ^{GC} HIST 105 (F) RECR 106 (S) RELS 210 ANTH 112 ^{GC} ANTH 116 ^{GC} GEOG 106 ^{USD}

Upper-Division GE Pathway Courses for CMPE Majors

TWO upper-division GE courses in the SAME Pathway (column) are required: one course in UD-C area and another in UD-D area.

If you have already completed one Theme (now discontinued) course, select a second course in the unfulfilled area (Arts/Humanities or Social Sciences) from (i) the Pathway courses suggested in your Degree Progress Report (in Portal) or (ii) the *GE Crosswalk from Themes to Pathways* at http://www.csuchico.edu/ge/documents/ge_crosswalk_themes_pthwys_022712.pdf.

Area	Diversity Studies	Ethics, Justice & Policy	Food Studies	Gender & Sexuality Studies	Global Development Studies	Great Books & Ideas	Health & Wellness	International Studies	Science, Technology & Values	Sustainability
UD-C Arts/ Humanities	ENGL 364 ^{USD/WI} FLNG 355 ^{USD} PHIL 337 ^{USD/WI}	ENGL 355 (F) ENGL 356 (S) PHIL 323 ^{WIC} PHIL 341 ^{GC/WIC}	HIST 341 ^{USD} PHIL/RELS 339 ^{WIC}	HIST/WMST 326 (F) HIST/ASST 377 ^{GC(S)} MCGS 310 ^{USD/WIC} THEA/MCGS 315 ^{USD}	ENGL 353 ^{USD} HIST 382 ^{GC/} LAST 350 ^{GC(F)} HIST 381 ^{GC(S)} RELS 332 ^{GC}	HUMN 300 ^{WIC}	ENGL 342 ^{WI} HIST 305 ^{GC} PHIL 327 ^{WIC}	FLNG 340 (F) FLNG 380 (S) HIST 373 ^{GC(F)} HIST 374 ^{GC/WIC(S)} RELS 332 ^{GC}	ENGL 350 ^{USD/WI} PHIL 370 RELS 357 ^{WI}	ENGL 338 ^{WIC} HIST 341 ^{USD} PHIL 336 ^{USD}
UD-D Social Sciences	ECON 340 GEOG 352 ^{USD} SOC/MCGS 350 ^{USD}	ECON 340 POLS 365 ^{WIC} PSYC 391 ^{USD}	ABUS 390 ^{GC} ANTH 340 ^{GC/WIC}	CHLD 333 ^{WIC} POLS/WMST 324 ^{WI(F)} POLS/MCGS 401 ^{WI(S)} PSYC 345	ANTH 376 ^{GC/WIC(F)} ANTH 377 ^{GC/WIC(S)} GEOG ^{GC/} LAST 357 ^{GC} SOC 370 ^{GC(F)} SOC 354 ^{GC(S)}	SOSC 300	ECON 352 HCSV 370 SOC 363	GEOG 303 ^{GC} POLS 341 SOC 370 ^{GC(F)} SOC 335 (S)	ANTH 333 ^{GC} CDES 307 PSYC 321	ECON 365 GEOG 304 SOC 420

Chosen Pathway: _____ (or circle the Pathway in the table above)

Upper-Division Pathway	Completed**	Course Prefix/No.	U.S. Diversity (USD)**	Global Cultures (GC)**	Writing Intensive (WI)**
UD-C (Arts & Humanities)					
UD-D (Social Sciences)					

Student Signature: _____ Date: _____

Advisor Signature: _____ Date: _____

Note that you can apply for graduation online at: http://www.csuchico.edu/evaluations/forms/grad_app.shtml