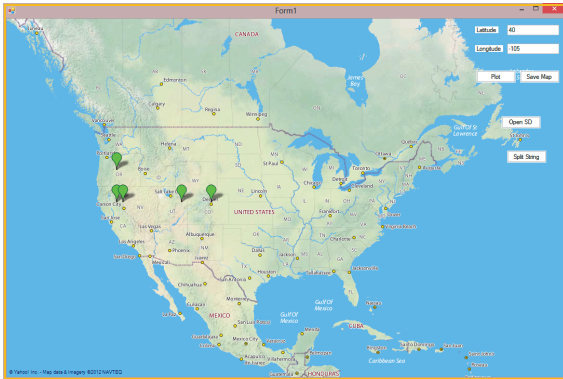


# GPS Tracker

Product Data Sheet

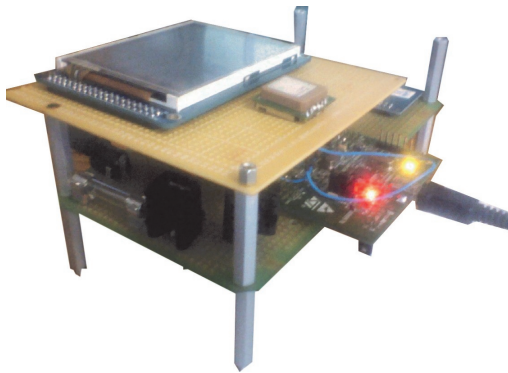
## Software



## Features

- Route Logging
  - Latitude and Longitude
  - Date
  - Direction Heading
  - Day/Month/Year
- .NET Windows Application
  - Save Image of travel to desired location - .PNG & .JPG supported
  - Zoom In/Out capability on Map
- Two User Mode
  - SD Card logging
    - Data is logged onto SD
  - LCD Viewing
    - Data is viewed on LCD

## Hardware



## General Description

The GPS Tracker allows a user to log his/her path of travel. It keeps track of their route from point A to B. An SD card is part of the project and the travel history is saved on to it. Once ample data has been logged, the user is able to take the SD card and plug it into his/her personal computer, where the user can launch the .NET application which will be responsible for displaying the logged data from the SD card.



Harjit Singh  
EECE 490B  
Product Data Sheet