

# CALIFORNIA STATE UNIVERSITY, CHICO



**DIVISION OF STUDENT AFFAIRS**  
Milton Lang, Vice President

**ENROLLMENT MANAGEMENT SERVICES**  
Barbara Fortin, Associate Vice President  
ADMIN IV

Theresa Mundy  
AA/S IE

**OFFICE OF ADMISSIONS**  
Kim Guanzon, Director  
ADMIN III

**Gudrun Schuenemeyer**  
Office Coordinator  
ASC I

**ACADEMIC ADVISING PROGRAMS**  
Kaitlyn Baumgartner Lee, Assistant Vice President for University Advisement  
ADMIN II

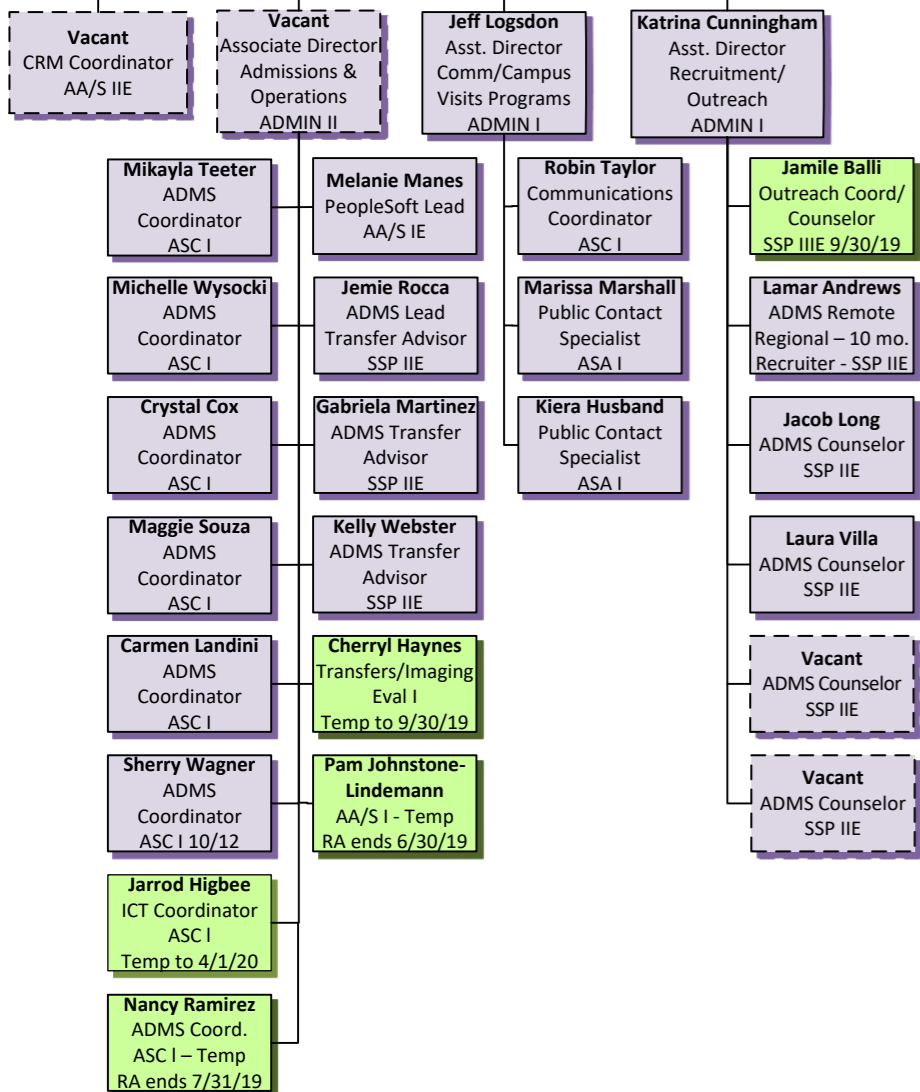
Vacant  
Office Coordinator  
ASC I

**FINANCIAL AID AND SCHOLARSHIP OFFICE**  
Dan Reed, Director  
ADMIN III

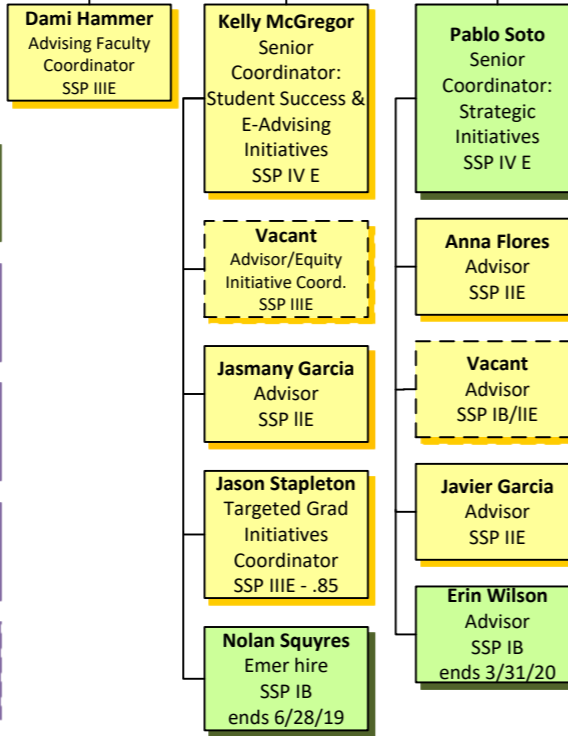
**Karen Betenbaugh**  
Office Coordinator  
ASC I

**OFFICE OF THE REGISTRAR**  
Michael Allen, University Registrar  
ADMIN III

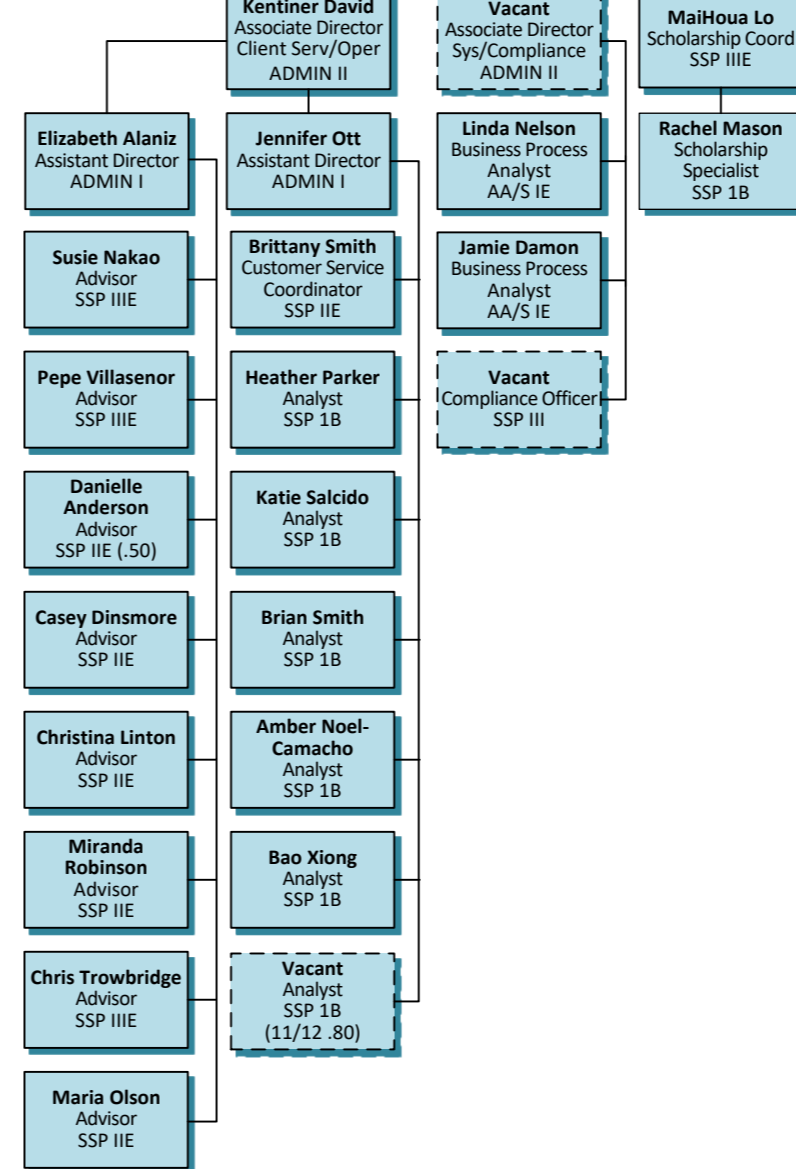
**Susie Funk**  
Office Coordinator  
ASC I



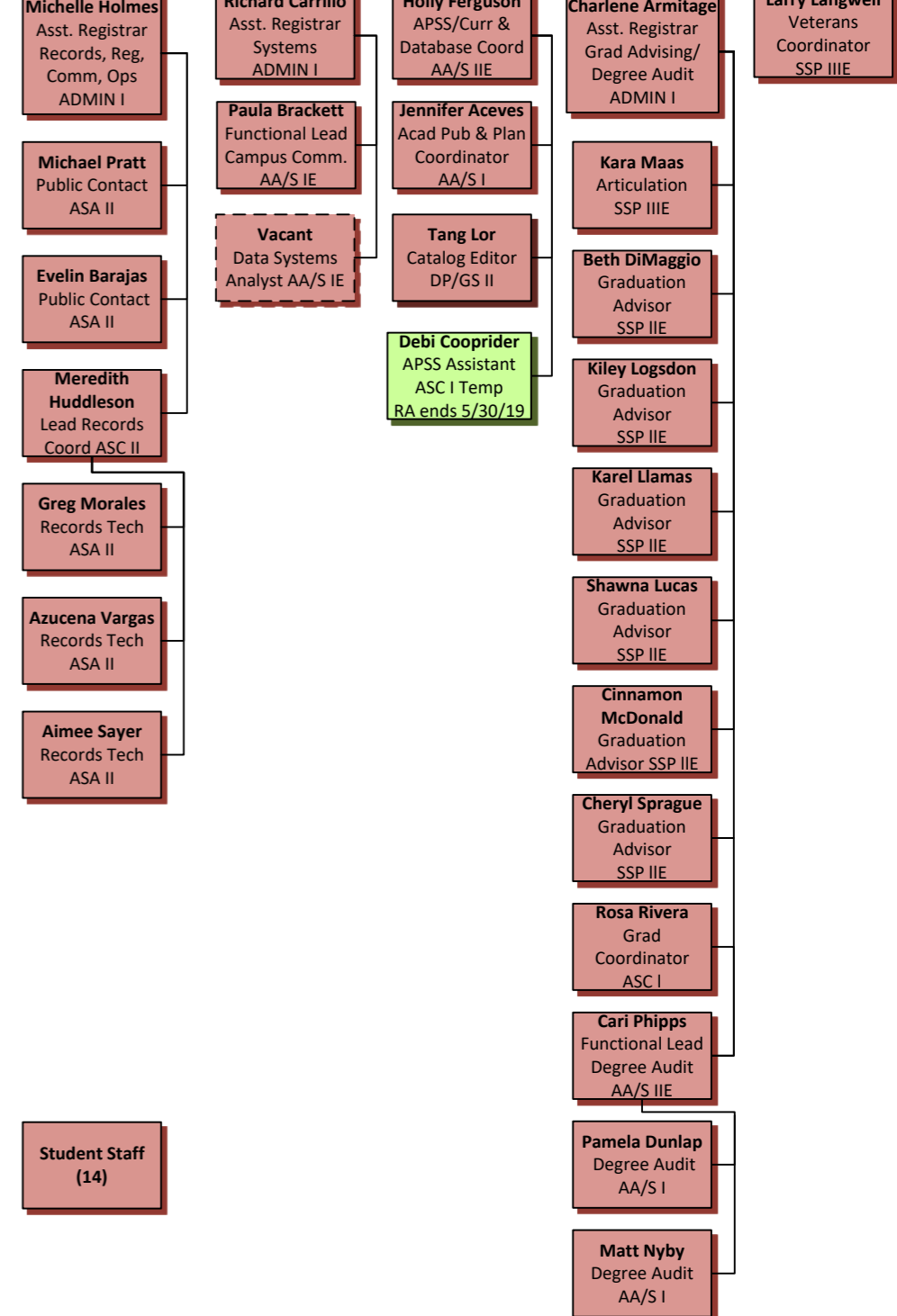
Student Staff (23)



Student Staff (13)



Student Staff (10)



Student Staff (14)

Temporary position

Double lined squares indicate EMS Leadership Team Members

Revised 5/9/2019