



FIRST YEAR MATH MATH PLACEMENT

CSU Multiple Measures Non-STEM & STEM

Conditional Placement Information



GE B4 Fulfilled

STEM Majors: Review ALEKS PPL



GE B4 Ready

STEM Majors: ALEKS PPL Needed



GE B4 Ready with Support

All Majors: ALEKS PPL Recommended

Cat I: GE B4 Fulfilled

1. GE B4 Completed
2. Math specified by major
STEM - ALEKS PPL

Cat II: GE B4 Ready

1. GE B4 Ready
2. Math specified by major
STEM - ALEKS PPL

Category III & IV: GE B4 Ready w Support

1. GE B4 Ready with Support
2. Math specified by major
ALL - ALEKS PPL

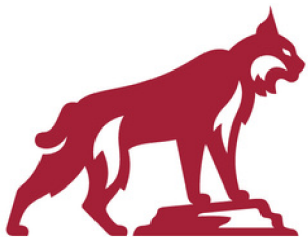


ALEKS PPL

Calculus readiness or placement
assessment & first year preparation

**Study &
 assessment
 tool**

**Assessing =
 3 Steps**



FIRST YEAR MATH MATH ENROLLMENT



GE B4 Fulfilled

STEM Majors: Review ALEKS PPL

- Review **Math for My Major** to determine what is math required
- Course substitution request/ review
- STEM: Transfer/test credit not calculus-based = ALEKS PPL assessment



GE B4 Ready

STEM Majors: ALEKS PPL Needed

- Review **Math for My Major** to determine what is math required
- STEM: ALEKS PPL assessment
- GE B4 in Year One

Cat II: GE B4 Ready

- FINA 101 (GE B4 Not Specified)
- MATH 101 (GE B4 Not Specified)
- MATH 105 (Major w Stats & GE B4 Not Specified)
- MATH 107 or 108 (Business Majors)
- MATH 109 (STEM *fall only; ALEKS PPL)
- MATH 110 (Liberal Studies)
- MATH 118 (STEM: Default)
- MATH 119 (STEM; ALEKS PPL)
- MATH 120 (STEM: ALEKS PPL)



GE B4 Ready with Support

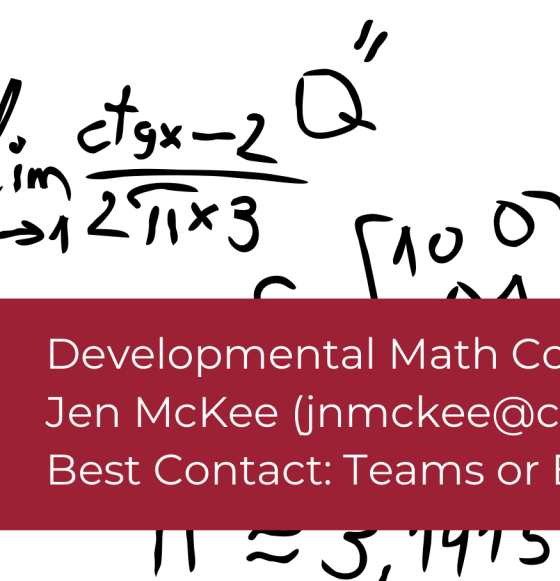
All Majors: ALEKS PPL Recommended

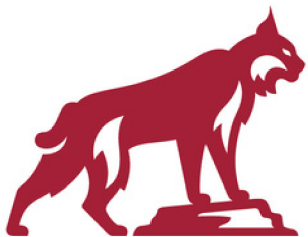
- **Pre-enrolled into GE B4 Ready with Support** course (fall or spring*)
- All: Recommend ALEKS PPL
- Not eligible for GE B4 Ready prereq courses until GE B4 Support
- GE B4 in Year One

Cat III/IV: GE B4 Ready w Support

- MATH 101 + ALEKS (GE B4 Not Specified)
- MATH 105 + 005L (Major w Stats & (GE B4 Not Specified)
- MATH 107 + 007L (Business Majors)
- MATH 110 + 010L (Liberal Studies; spring only)
- MATH 116 + 016L (STEM)

- MATH 101 - Sections 10-13 (All)
- MATH 105 + 005L- Sections 30-43
- MATH 107 + 007L- Sections 30-33
- MATH 110 + 010L- Section 01
- MATH 116 + 016L- Section 01-02 (All)





FIRST YEAR MATH GE B4 READY W SUPPORT

Student Center (High Point/Student)

- My Schedule
- Dashboard
- Enrollment
- Academic Progress
- Student Records
- Tasks**
 - To Dos
 - Tasks
 - Holds** ✓
- Profile

Math/Quantitative Reasoning

Reason: GE Math Ready with Support

Department: Mathematics & Statistics

Math/Quantitative Reasoning

DETAILS
 Reason: GE Math Ready with Support

INSTRUCTIONS

NOTE: This is a reminder notice and not a registration hold. This reminder will stay on your account until the required course is successfully completed or a proctored assessment score confirms you are eligible for a higher level math course.

Your [math placement level](#) requires you to enroll in a General Education Mathematics/Quantitative Reasoning with Support course ([GE Area B4 with Support](#)) within your first year. It is recommended to study with [ALEKS PPL](#) to prepare for math courses or re-assess your math placement level. For questions, contact the [Department of Mathematics and Statistics](#), HOLT 101, (530) 898-6111, mathdept@csuchico.edu.

Student Center (Classic)

Holds

Math/Quantitative Reasoning

[Details](#)

To Do List

No To Do's.

Holds

Department-No add
 Informational Message
 Math/Quantitative Reasoning
 Department-No Add or Drop

[Details](#)

Display Effect **Negative** Institution **California State Univ, Chico** Refresh

Service Indicator Summary

Code	Code Description	Reason Description	Institution	Start Term	Start Term Description	End Term	End Term Description	Start Date	End Date
ELM	Math/Quantitative Reasoning	GE B4 Ready with Support	CHICO	2238	Fa 2023			05/25/2023	

Admissions Inquiry

Academic Preparation Placement

Major Pathway: **STEM**

W/C Status: 5-PlaceGPA Category: II-A2 Plc

Math/QR Status: 0-NoReqMet Category: IV-B4S ESP

Overrides: None

HS Math GPA: 2.830 HS Math GPA Verified

HS Math/QR Terms: 9 HS Math Terms Verified

Academic Preparation Placement

Major Pathway: Undecided

W/C Status: 18-G/4EngC Category: III-C-A2 SC

Math/QR Status: 12-GPANS Category: III-B4Supp

Overrides: None

HS Math GPA: 1.500 HS Math GPA Verified

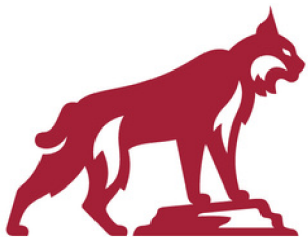
HS Math/QR Terms: 5 HS Math Terms Verified



- **Reminder- Not a Hold**
- Will not block enrollment...
- Except for when QR/B4 or GE Ready is the prereq

Developmental Math Coordinator
 Jen McKee (jnmckee@csuchico.edu)
 Best Contact: Teams or Email

Math Department Holt 101
 530-898-6111 General
 530-898-3487 Jen



FIRST YEAR MATH ADVISING DETAILS

Tips

- Review CS360 Notes
- Don't assume, ASK
- If error, check section, time conflict, repeat policies
- Service indicator vs Hold vs Prerequisite vs Milestone
- Transcripts, test scores may still be needed
- Dev math course pairings; must be together
- Students can opt for support; *must* commit to both components
- *New students*: conditional placement, conditional admission C4, UD transfers
- **ALEKS PPL study resource!**

Class Schedule



- Pay attention to section
- Review 'Class Notes'
- Courses are often paired

SECTION	DAYS	START	END	ROOM	INSTRUCTOR	DATES	UNITS	STATUS	INSTRUCTION MODE
> 10-LEC (4207)	TBA	-	-	Online	Edward Roual...	01/23 - 05/19	0	3/245	Fully online, async...
> 11-DIS (4208)	Tu	9:30 am	10:45 am	Holt Hall 187	Rachel Schlei...	01/23 - 05/19	3	20/35 0/35	In person
> 12-DIS (4209)	Th	9:30 am	10:45 am	Holt Hall 185	Rachel Schlei...	01/23 - 05/19	3	28/35 0/35	In person
> 13-DIS (4210)	Tu	11:00 am	12:15 pm	Holt Hall 187	Rachel Schlei...	01/23 - 05/19	3	24/35 0/35	In person
> 14-DIS (4211)	Th	11:00 am	12:15 pm	Holt Hall 185	Allison McCo...	01/23 - 05/19	3	31/35 0/35	In person
> 15-DIS (4212)	Tu	3:30 pm	4:45 pm	Holt Hall 257	Allison McCo...	01/23 - 05/19	3	31/35 0/35	In person
> 16-DIS (4213)	Tu	9:30 am	10:45 am	Holt Hall 187	Rachel Schlei...	01/23 - 05/19	3	20/35 0/35	In person
> 17-DIS (4214)	Th	9:30 am	10:45 am	Holt Hall 185	Rachel Schlei...	01/23 - 05/19	3	28/35 0/35	In person
> 23-LEC (4555)	MoWe	9:00 am	9:50 am	Holt Hall 155	Katie Raymond	01/23 - 05/19	0	15/35	In person
CLASS NOTES This section is only available to students required to take MATH 005L. Students enrolling in this section are required to also enroll in MATH 005L-23.									
> 24-DIS (4556)	Fr	9:00 am	9:50 am	Holt Hall 155	Katie Raymond	01/23 - 05/19	3	15/35	In person
CLASS NOTES This section is only available to students required to take MATH 005L. Students enrolling in this section are required to also enroll in MATH 005L-23.									



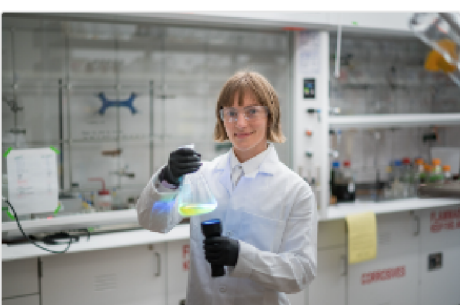
**Class
 Schedule
 Hybrid vs.
 Supported
 Math**

Preparing for Your First Year



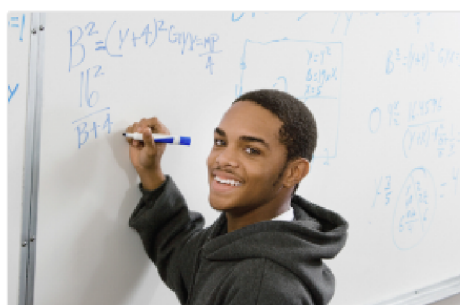
ALEKS PPL

Calculus readiness or placement assessment & first year preparation



STEM at Chico State

Math intensive majors (require precalculus or above)



Math for My Major

Review courses by major & placement level

First Year Math Advising



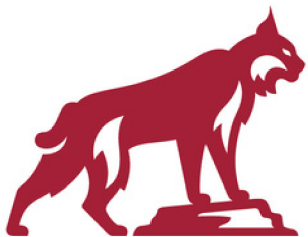
Walks thru
 ALEKS PPL &
 assessment
 process



Highlights
 what majors
 are STEM
 designated



Advises math
 needed for
 major based
 on placement



FIRST YEAR MATH STEM PATHWAY

START ➔

Cat III & IV:

GE B4 Ready w Support

MATH 116 + 016L

College Algebra + Support

ALEKS PPL 1-45

Cat II: GE B4 Ready.

(or Cat I: GE B4 Fulfilled no calculus).

MATH 118 Trigonometry

(Default)

ALEKS PPL Up to 60

OR

Cat II: GE B4 Ready.

MATH 118

Trigonometry

ALEKS PPL 46-60

Cat II: GE B4 Ready.

(or Cat I: GE B4 Fulfilled no calculus).

MATH 119 Precalculus

ALEKS PPL 61-75

OR

Cat II: GE B4 Ready.

MATH 119

Precalculus

ALEKS PPL 61-75

Cat II: GE Ready.

MATH 120 Analytic Geometry & Calculus

(or MATH 109 Survey of Calculus)

ALEKS PPL 76+

ALEKS PPL Assessment

1. Initial knowledge check (unproctored)
2. Study with personalized learning modules (min 3 hrs)
3. Proctored assessment; campus or ProctorU

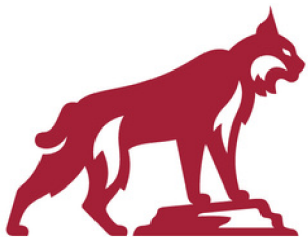


ALEKS PPL

Calculus readiness or placement
assessment & first year preparation



ALEKS PPL for AY 23-24



California State University **Chico**
 Mathematics and
 Statistics Department

FIRST YEAR MATH MATH RESOURCES

SPRING 24

Math Learning Lab (MLL)
Drop in tutoring: MLIB 4th Floor

Student Learning Center (SLC)
Subject Tutors: SSC 340

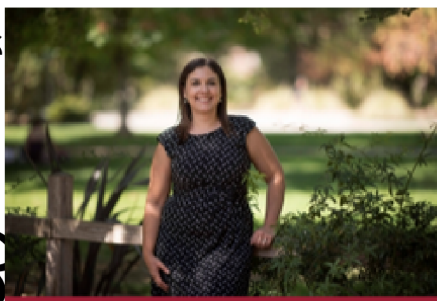
Embedded Tutors
Section Specific: Locations TBD

Office Hours
Posted on Math Dept website

Dev Math Coordinator
Math Dept Holt 101

ALEKS PPL, Purple Math, Khan Academy, YouTube
ALEKS, Stat Crunch, MatLab, Pierson, textbooks, codes
Study groups, attendance, time management

First Year Math Advising



Email Jen

Jennifer McKee
 First Year Math Coordinator
 Holt Hall, Room 101
 (530) 898-6111 Dept Office
 (530) 898-3487 Direct
 jnmckee@csuchico.edu



Meet with Jen

- Express Appt (15 mins; quick questions/enrollment)
- First Year Advising (30 mins; math placement/progression)
- Meet with Jen (30 mins; other/resources)

Developmental Math Coordinator
 Jen McKee (jnmckee@csuchico.edu)
 Best Contact: Teams or Email

Math Department Holt 101
 530-898-6111 General
 530-898-3487 Jen

