

Technology and Learning Program : How to Create Demographic Slides in TurningPoint

This page last changed on Apr 02, 2008 by ibrooks.

Table of Contents

- [Introduction](#)
- [Getting Started](#)
- [Creating a Demographic Slide](#)

Introduction



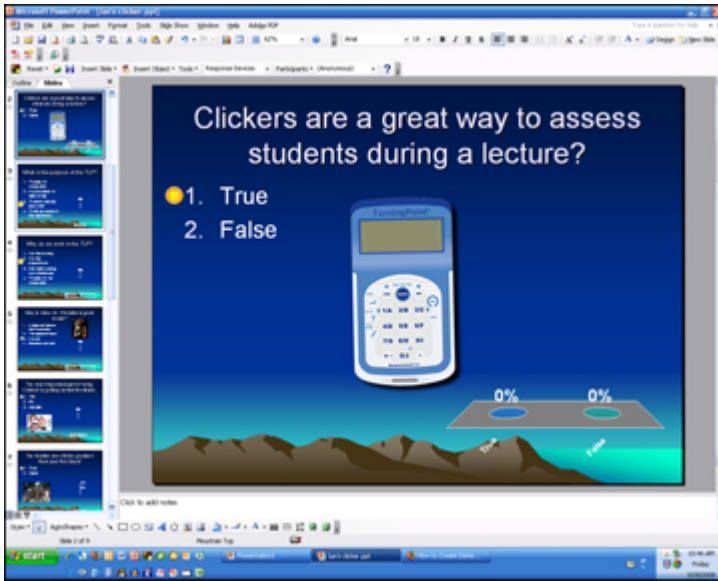
At some point when using TurningPoint in your instruction, you may want to see how students respond to questions demographically. For example, you may want to see how the female population of your class answer a particular question in relation to how the male population answer. You can do this in TurningPoint by creating a demographic slide at the beginning of your PowerPoint presentation, and then linking it to other questions that follow. The following job aid will walk you through this process.

Getting Started

Step 1: Open TurningPoint.

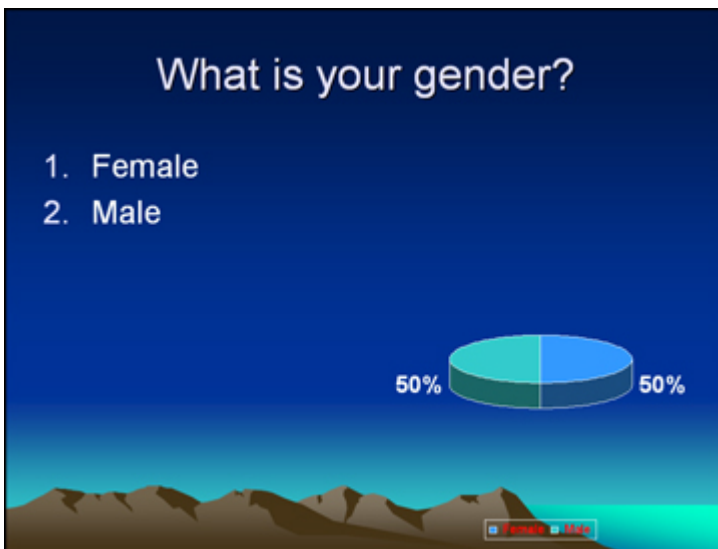



Step 2: Now, within TurninPoint, open your PowerPoint presentation.



Creating a Demographic Slide

Step 3: The first thing we need to do is create a slide that asks a specific demographic question. **e.g.** What is your gender? When students answer this question, TurningPoint will register them to a particular demographic. This slide will be used to link to other slides that you want to show demographic results.

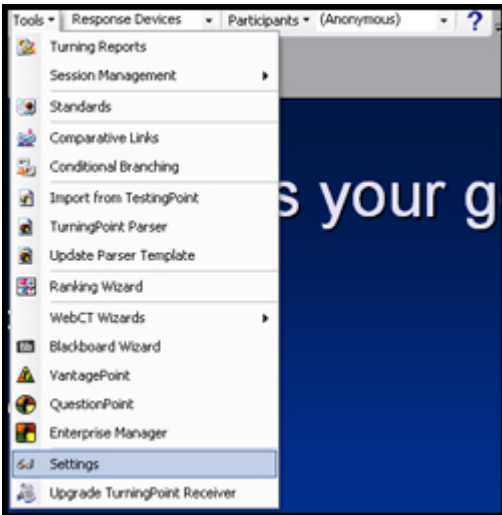


 Moving this slide to the beginning enables you to show demographic results throughout the rest of your presentation.

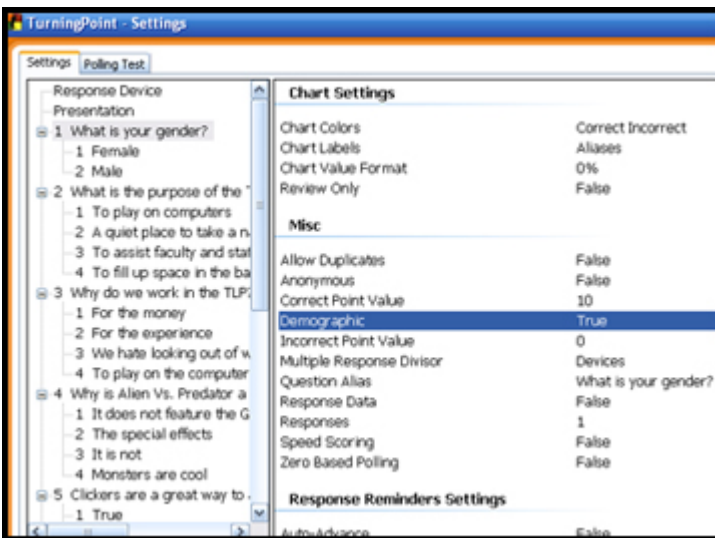
Step 4: Once this slide is created and moved to the front of your presentation, we need to change it from a standard slide to a demographic slide. The demographic slide will be used to tell the slides it is linked to, to show demographic results.

Demographic	True
Incorrect Point Value	0
Multiple	Determines if this question will be treated as a demographic question.

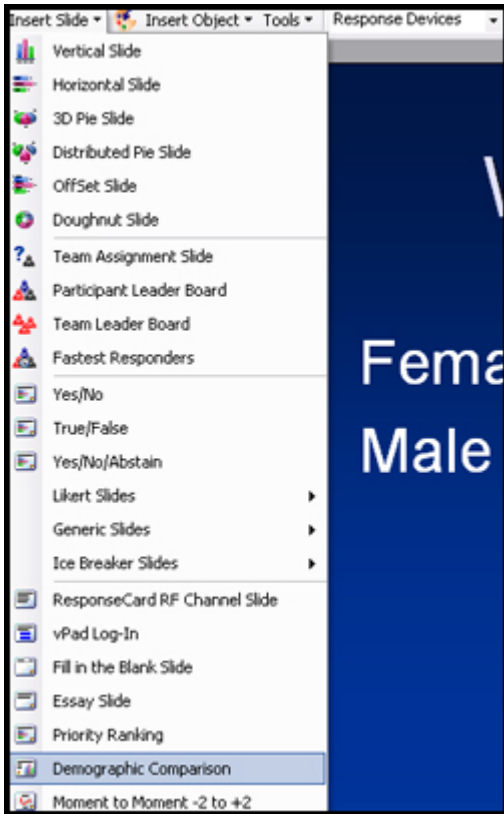
Step 5: To do this, locate the **Tools** option in the TurningPoint toolbar within PowerPoint. Now, in the tools option, select **Settings**.



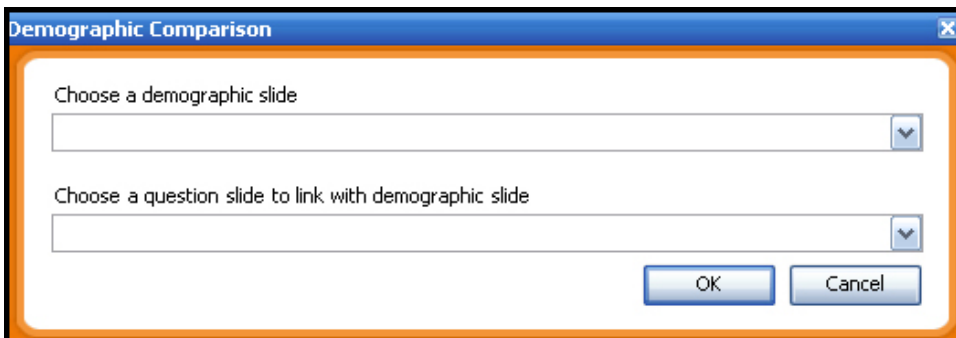
Step 6: This will open the settings window for you. Under **Misc**, choose **Demographic** and change it to **True**. You now have a demographic slide that can be linked to other question slides when you want to show the responses according to demographics.



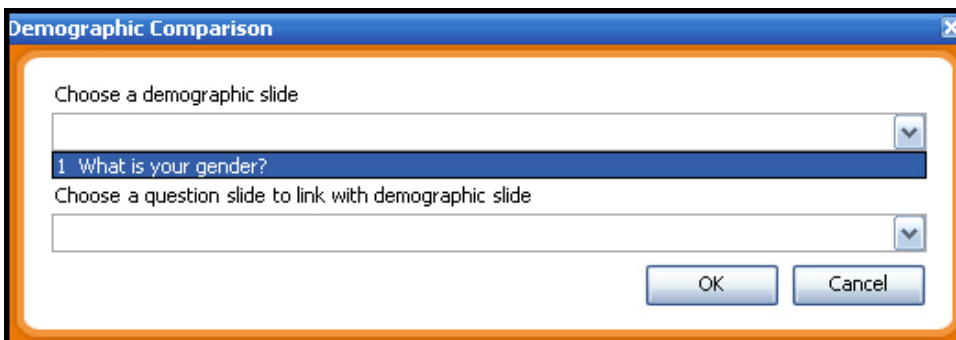
Step 7: Now that we have created a demographic slide, we need to link it to standard, or question slides, in order to show the responses demographically. To start this process, select the **Insert Slide** option from the TurningPoint toolbar. Now select **Demographic Comparison**.



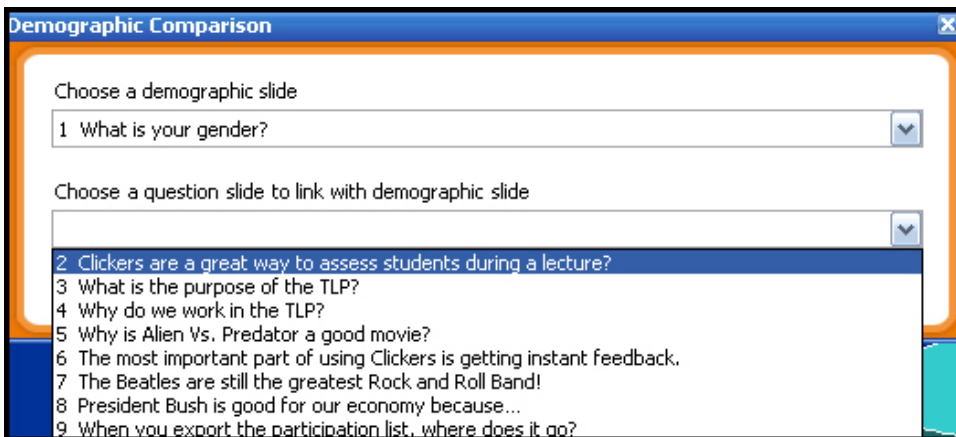
Step 8: This will open the Demographic Comparison window and will be where you link the demographic slide to the question slides.



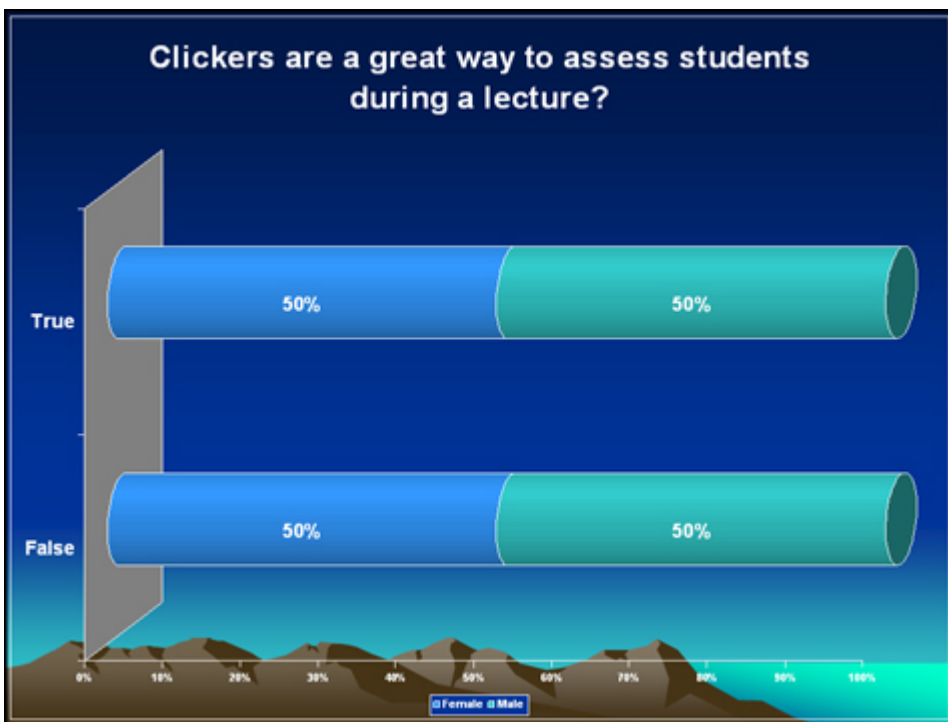
Step 9: Use the drop down window to select the demographic slide you created earlier.



Step 10: Now, use the second drop down window to choose the question slide you want to link with the demographic slide. This will create a demographic response slide for each of the question slides you select.



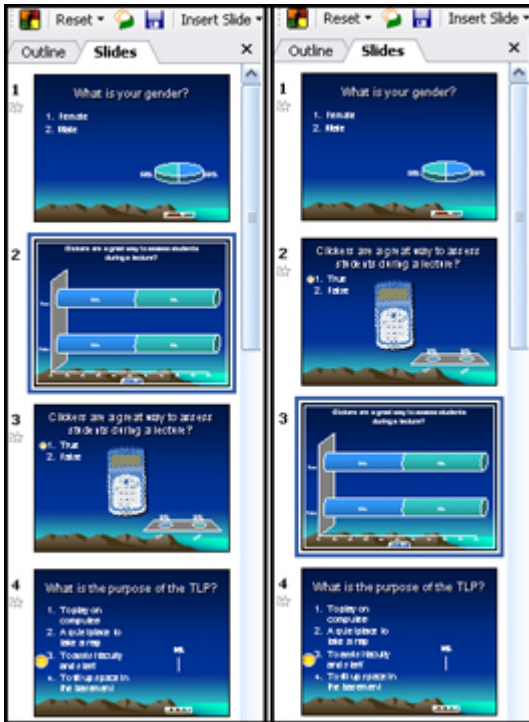
Step 11: Once you click **OK**, your demographic response slide will be created. This slide will show you the results from the question slide demographically.



Step 12: Now that you have created your demographic response slide, you need to place it where you want it in your presentation. Usually instructors placed them after the question slide, or at the end of the presentation. To do this, Use the **Slides** option at the right of the page.



Step 13: Now drag and drop the slide where you want it and save your presentation.



Step 14: Save your presentation and you are ready for class.